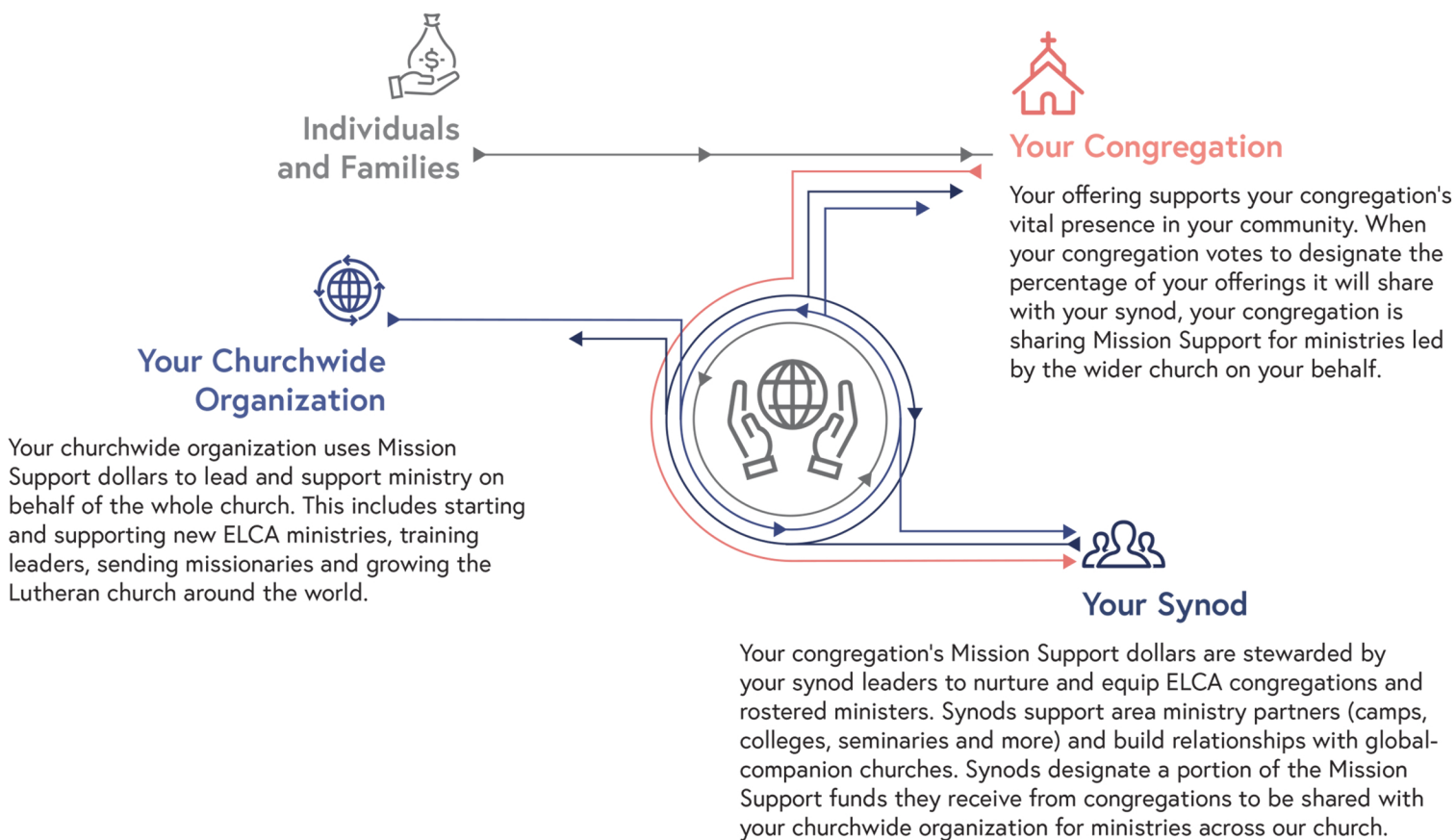
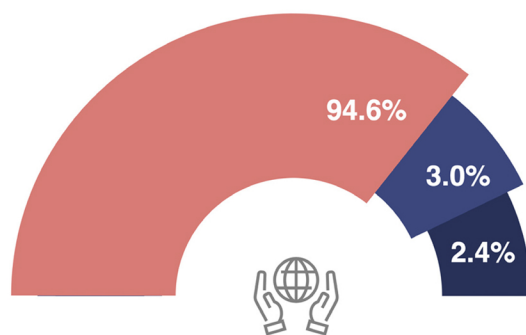


How Mission Support Funds Ministry Across Our Church



Where Does My Offering Go?

In 2021, through the generosity of ELCA members, \$1.6 billion was shared in unrestricted offerings* to support God's mission and ministry through the three expressions of the ELCA. Thank you for your support of the



94.6%
Congregations

\$1.59 billion was stewarded by over 8,900 ELCA congregations and worshipping communities.

\$90.8 million was shared by congregations with their synods as Mission Support.

3.0%
Synods

\$50.2 million in Mission Support was stewarded by the ELCA's 65 synods.

2.4%
Churchwide Organization

\$40.6 million in Mission Support was stewarded by the ELCA churchwide organization.

*Unrestricted offerings do not include special offerings (e.g., congregational capital improvements or gifts to ministries such as Lutheran Disaster Response or ELCA World Hunger).

How Your Offering Becomes Mission Support

As Lutherans, we believe that Christ has freed us from sin and death, and even from ourselves, so that we can love and serve our neighbors. One way we turn our faith into action is by making a financial gift — an offering — to our congregation.

Each year, ELCA congregations pledge to send a portion of their offerings to fund ELCA ministries in their synods and beyond. We call these funds Mission Support.

Mission Support enables the ELCA's more than 8,900 congregations and 65 synods to pool resources to love and serve our neighbors in ways that no individual or congregation can do alone. Mission Support is one way we are church together — it's essential to who we are as the ELCA. Through Mission Support, we expand our participation in God's life-changing work in our communities and around the world.

