

LifeLines

For supporters of
ELCA WORLD HUNGER

ELCA World Hunger is a ministry of the
Evangelical Lutheran Church in America to end
hunger in the United States and around the world.
www.ELCA.org/hunger

Fall 2015



**2014
Year in Review**



ELCA World Hunger
Evangelical Lutheran Church in America
God's work. Our hands.



ELCA World Hunger
Evangelical Lutheran Church in America
 God's work. Our hands.

Dear friend of ELCA World Hunger,

I knew every word of the lyrics to the Byrds' "Turn! Turn! Turn!" (penned by Pete Seeger) before I had heard the full words from the book of Ecclesiastes: "To everything (turn, turn, turn). There is a season" So what season are we in for ELCA World Hunger?

Last year was a big birthday for our beloved program. ELCA World Hunger turned 40 years old. Lutheran Disaster Response will do so soon. As we look back on 2014 and remember how diligently we worked to respond to a cause that we've been called to or chosen, we recognize the work would not be possible without you. We are thankful for your faithful generosity and for you standing shoulder-to-shoulder with us as we fight hunger and poverty, here at home and around the world.

Through your gifts to ELCA World Hunger, the ELCA Malaria Campaign, and Lutheran Disaster Response, we had the opportunity to serve our brothers and sisters in more than 65 countries and respond to more than 50 crises, in 2014 alone.

We are encouraged to see many of the communities we serve move toward self-sufficiency and in their new stability, turn to help others. Last year, along with our successes, we also had the opportunity to learn and grow from new challenges.

We weathered some storms - not to mention hurricanes, tornadoes, earthquakes and floods - and have faced turning economies. But with the boldness that comes from faith, we are preparing for a season of growth - in partnerships, impact and support.

Hunger is prevalent, but we are making headway, and we invite you to continue with us on this fight to end world hunger. In the pages ahead you will have a chance to learn about the programs that have been supported and the lives that we've reached through your gifts.

We invite you to take up the challenge to end hunger and poverty by continuing to support ELCA World Hunger, as we strive to reach more lives in more places.

With gratitude for your commitment,

THE REV. DANIEL RIFT
 DIRECTOR,
 ELCA WORLD HUNGER
 AND DISASTER APPEAL

The Rev. Daniel Rift

Director,
 ELCA World Hunger
 and Disaster Appeal

How to give

Online
www.ELCA.org/hunger/donate

Phone
 800-638-3522

Mail
 Make checks payable to
 "ELCA World Hunger"
 and mail to:
 ELCA
 P.O. Box 1809
 Merrifield, VA 22116-8009

Contact us

Email
hunger@elca.org

Phone
 800-638-3522, ext. 2616

View this issue online

www.ELCA.org/hunger/resources

© 2015 Evangelical Lutheran Church in America. ELCA congregations may reproduce this newsletter in part or in its entirety.

Table of Contents



ELCA WORLD HUNGER

AGRICULTURE & NUTRITION

Table service 4

WATER & SANITATION

Quenching more than thirst 6

HEALTH CARE & PREVENTION

Angel's wings 8

INCOME & SAVINGS

More than a paycheck 10

EDUCATION & TRAINING

Tailor made 12



LUTHERAN DISASTER RESPONSE

Ebola: The road to zero 14



ELCA MALARIA CAMPAIGN

Overcoming poverty and malaria 16



MAPPING OUR IMPACT

Your gifts at work 18



FINANCIALS

2014 Financial highlights 20

AGRICULTURE & NUTRITION



ELCA World Hunger



Soup kitchens, food pantries and meal programs provide immediate support to those in need. Community gardens and agricultural programs help families grow food for nourishment and build safer, healthier communities for the long term.



“When the church does community well, we do it well. We come around the table to gather for lunch and God’s meal, and people need a lot of both.”

– PASTOR MARGARET

Shobi’s Table is one of 400 domestic programs – based right here in the United States – supported by your gifts to ELCA World Hunger.

Table service

The opportunity to serve and be served, a nutritious meal, and a time of prayer are what is offered weekly at Shobi’s Table – a food truck that serves people experiencing homelessness in St. Paul, Minn. Pastor Margaret Mary Kelly and Noah (pictured above) have both been there from the beginning. Noah, who has lived in poverty in the Twin Cities, was keenly aware of the limited dietary options and community for those living on extreme margins. As Noah has observed, “Here, it’s about quality, not quantity. In St. Paul, there’s enough food, but not always the right kind of food.”

Together they worked to find a solution. Their proposed solution came in the form of a food truck – a vehicle that would allow them to serve freshly prepared meals and provide food to the community at a location that was a natural gathering place for many.

Your generous gifts to ELCA World Hunger helped to make Shobi’s Table a reality. As a recipient of an ELCA World Hunger-funded Domestic Hunger Grant, Pastor Margaret

and Noah have been part of serving around 75-100 neighbors a week, since 2014.

Shobi’s Pockets, as the portable meals have been nicknamed, come filled with a variety of vegetables and meat wrapped in freshly baked bread. Volunteers prepare an assortment of these pockets each week offering patrons with meal options, including vegetarian and non-vegetarian meals.

Tangible food isn’t the only thing on the menu. Community is at the heart of Shobi’s Table’s mission, which happens as people eat the food and Communion is shared. “Most churches put people in a square or circle hole, but here, everyone is accepted,” says Noah.

What is Shobi’s Table’s hope for the future? Their long-term goal is to acquire a bus that would offer indoor and outdoor seating to protect their patrons from the cold Minnesota winter months and to expand their offerings to include vocational training. Each plan is designed to lead them one step closer to accomplishing their mission – to provide food, friendship, faith and employment skills to the homeless and near homeless people of St. Paul.

WATER & SANITATION



ELCA World Hunger



Water for drinking, growing crops, sanitation and hygiene, paired with ongoing health education, training and maintenance helps create healthier families and stronger economies.



“This borehole is not only about drinking water, it is about food, it is about money, it is about the lives of the 352 pupils and teachers as well as the continuity of this institution.”

- JONAS MULEYA, AGRICULTURE TEACHER
AT SIYOKA SECONDARY SCHOOL

The Evangelical Lutheran Church in Zimbabwe is one of many global companion churches responding to hunger with local context, expertise and ingenuity. Your gifts to ELCA World Hunger support a worldwide network of Lutheran churches in the important work of identifying and tailoring solutions that can put a halt to hunger in the long-term.

Quenching more than thirst

Eighty percent of the population in Zimbabwe lacks access to clean water, with even fewer with adequate sanitation. In Beitbridge, Zimbabwe, home of the Siyoka Secondary School, the community's sole source of water was contaminated with waterborne pollutants. With no other option, the people of Beitbridge walked two miles one-way to retrieve this water. It was the main responsibility of the students of Siyoka Secondary School to walk, collect and carry water back for their family's use.

Waterborne disease is the leading cause of death for the people of Zimbabwe. In response, Lutheran Development Services, supported by your gifts to ELCA World Hunger, worked shoulder-to-shoulder with the community to identify a long-term solution. A new borehole, centrally located in the community, was constructed and has

provided access to safe drinking water for the students, teachers and community members of Beitbridge.

The borehole has had a ripple effect in the community. "Water has come to our doorstep," says Jonas Muleya, an agriculture teacher. "Latrines are cleaned and diseases like cholera, typhoid and dysentery have been kept at bay." The nearby borehole has also spared students the time and labor once associated with retrieving water – school attendance and the health of the students has never been better.

The benefits have extended beyond health and education. Access to fresh water has made agriculture a possibility for the community. Crop irrigation has led to large harvests. "We teach practical agriculture, sell vegetables and eat vegetables," says Jonas, while pointing at the garden and smiling. "Life has changed here."

HEALTH CARE & PREVENTION



Paul Jeffrey/ACT Alliance

ELCA World Hunger



Clinics and community health programs provide health education and medical assistance for people living in poverty and work to halt epidemics like HIV and AIDS, malaria and water-borne illnesses.



“For me, as long as there are people with AIDS in this world, we cannot stop caring for them. They know that there are hands of God to help. They know that God loves them so much. I love people who are living with HIV and AIDS, too. Mother Teresa said, ‘The world today is hungry, not only for bread but hungry for love and to be recognized.’”

- SISTER NURHAYATI



Huria Kristen Batak Protestan in Indonesia is one of many global companion churches responding to HIV and AIDS with local context, expertise and ingenuity. Your gifts to ELCA World Hunger support a worldwide network of Lutheran churches in the important work of identifying and tailoring solutions that help to address disease, poverty, and stigma domestically and globally.

Angel's wings

If you met Angel in Indonesia, you wouldn't know that she was different from any other 7-year-old girl. But Angel is living with HIV. At an even younger age, she lost both of her parents to AIDS, and with no extended family or neighbors offering to take her in, she was without a home.

Angel's older sister, a young high school student, sought the support of her church's HIV and AIDS Committee. The Huria Kristen Batak Protestan - Protestant Christian Batak Church - HIV and AIDS Committee, which is generously supported by your gifts to ELCA World Hunger, was able to respond to God's call to care.

Sister Nurhayati, the committee's director, along with colleagues Sister Oka and Edwin welcomed Angel into their hearts and home. In their care, Angel is thriving. She is loved and physically cared for, with each taking turns making sure

she receives her medication regularly. Angel's teachers report that she's doing very well and has many friends at school and at the clinic.

Your gifts allow the HIV and AIDS Committee to care for children like Angel by providing medical attention, adequate nutrition, and a supportive community so the children and their families can live sustainable lives. Your generosity also helps support the hospital where the HIV and AIDS Committee works and also partnering hospitals and programs around the world in their efforts to educate, prevent and treat HIV and AIDS, malaria, tuberculosis, and other diseases of poverty.

Thank you for your commitment to ELCA World Hunger. Through you, those living with HIV and AIDS have a place where they can receive the support that they need to live full, healthy lives.

INCOME & SAVINGS



ELCA World Hunger



Income-generating activities and microloans help families pay for essentials like food, medical costs and school fees and create opportunities to start or upgrade small businesses.



WATCH THE VIDEO!

See Kenneth's story at
www.ELCA.org/hunger/resources



The Jobs Program at Cross Lutheran Church is one of 400 domestic programs - based right here in the United States - supported by your gifts to ELCA World Hunger.

More than a paycheck

A

job is often more than just a paycheck. As Pastor Michelle Townsend de Lopez of Cross Lutheran Church in Milwaukee, Wis., says, "By societal standards your job determines your self-worth. [Without it] you don't have access to credit ... access to buy a home. You don't have access, period."

For Kenneth Barron Sr., finding a job was a key part in regaining the life and self-dignity he felt he had lost.

Once a well-respected karate teacher, Kenneth went through "some challenging years," which included struggles with addiction, divorce and incarceration. Similar to nearly 65 million Americans, Kenneth sought employment with the stigma of a criminal record. When employers found out about his record, "the application and interview stopped right there," according to Pastor Michelle.

But Kenneth refused to let his past determine his future. He sought the support of the Jobs Program at Cross Lutheran

Church - a program supported in part by your gifts to ELCA World Hunger. Through the program, Kenneth was able to secure a cleaning contract with a local school. "I am able to walk this street and know that I have a chance [and] the resources out here to help me to rebuild [my life]," he says.

Kenneth also found a way to give back. "He now is a person who helps others," Michael Adams, jobs coordinator, says proudly.

For Kenneth, "It makes you feel like you are somebody, you're part of this world, you're contributing, and at the end of the day, you feel good about yourself, because you've done something positive - something that contributes to your family, yourself and your community," he says.

Thank you for your continued support of ELCA World Hunger. Your gifts help support immediate and long-term solutions to hunger, including helping people find jobs.

EDUCATION & TRAINING



ELCA World Hunger



By removing barriers, children and adults are able to attend school and secure better opportunities for their future. Programs like literacy training and vocational education also help teens and adults secure jobs and increase their earning potential.



“ I chose tailoring because I think this is most suitable. This is a craft a young lady can have for a livelihood. I am willing to teach my younger sisters and others from my village after I learn as much as I can. ”

– MA HONE HTON

The ELCA is a member of The Lutheran World Federation - a global communion of churches that are locally rooted and globally connected - is our church's primary channel for providing international relief and development. Its work is supported by your gifts to ELCA World Hunger.

Tailor made

Ma Hone Hton is a young woman who resides in Baw, a village of the Mindat township in the Chin State of Myanmar. Residents of her village, like so many across the country, suffer from life-threatening cases of diarrhea linked to inadequate sanitation and unsafe water. The Lutheran World Federation has partnered with 30 villages in Mindat to help end deaths related to such illnesses. Your gifts to ELCA World Hunger helped to ignite a project that addresses the root cause, offering each household access to their own latrine.

As the sanitation needs of the villagers were being met, The Lutheran World Federation observed a high level of unemployment, particularly among women. In response, it partnered with the government's Department of Education

and Training, which offered women tailoring and weaving classes at the Women's Home Vocational Training School. The training was free, but many could not afford the course materials.

Your generosity provided Ma Hone and 41 women in the nearby villages with the supplies they needed to complete the basic tailoring program.

In 2014, Ma Hone graduated first in her class and was awarded a sewing machine for her achievement. She now has the skills to make garments ranging from blouses to pants and jackets. She aspires to open a small garment shop in the town of Mindat.

Thank you for your commitment to ELCA World Hunger. It is through your generous gifts that our work can span from clean water and sanitation to education and training.

DISASTER



EC/ECHO/Jean-Louis Mosser CC-SA

Lutheran Disaster Response



Lutheran Disaster Response brings God's hope, healing and renewal to people whose lives have been disrupted by disasters in the United States and around the world. When the dust settles and the headlines change, we stay to provide ongoing assistance to those in need.



Sean Hawkey/ACT Alliance



Thanks to your generosity, gifts for the Ebola outbreak totaled nearly \$900,000.

[Actual total: \$867,532.25]

Ebola: The road to zero

The 2014 Ebola epidemic was the largest in history, affecting multiple countries in West Africa – the hardest hit being Liberia, Sierra Leone and Guinea.

The virus spread rapidly, with a high fatality rate. But now, just over a year after the epidemic began, things are different – especially in Liberia. Thanks in part to your gifts, the efforts of the international community and particularly the hard work of the people of Liberia, the epidemic in the country is over, with only a few, controlled cases currently present.

One key person in the fight against Ebola in Liberia was Bishop D. Jensen Seyenkulo of the Lutheran Church in Liberia. Many Liberians were initially cautious of the government's warnings about Ebola. Bishop Seyenkulo made many trips around the country in the midst of the epidemic to make sure people understood the seriousness of the situation and the care that was needed.

"I am reminded of an incident in one of the most devastated villages in the country where people refused to accept the country medical team or government officials," says Bishop Seyenkulo. "The only person they were ready to listen to was their bishop. At the invitation of country officials, I dropped everything and drove there to reassure community members.

At that point, the community opened itself to the medical help it needed."

Thanks to our long-standing relationship and your gifts, Lutheran Disaster Response was able to provide Ebola assistance in Liberia right away when the outbreak was just beginning. We worked with our companion, the Lutheran Church in Liberia, and partners – ACT Alliance, Lutheran Development Services, and Global Health Ministries. Together, we provided medical and disinfectant supplies, distributed food to people who were quarantined and helped in the construction of an isolation center at Phebe Hospital. We also helped cover air-freight costs for shipments of personal protective equipment.

Your generosity allowed Lutheran Disaster Response to be the church to walk with our brothers and sisters in Liberia during this difficult time. While we give thanks for how far we've come in the fight against Ebola, we continue to pray for the people who are still affected by the disease in Liberia, Sierra Leone and Guinea. The work is far from over.

Together, we will continue to walk with our brothers and sisters across western Africa on the road to achieving zero cases of Ebola and will help rebuild communities and health systems once we get there.

MALARIA



ELCA Malaria Campaign



The ELCA Malaria Campaign supports programs in 13 countries in sub-Saharan Africa. In Burundi, The Lutheran World Federation is the primary partner for programming within communities to break the cycle of poverty and overcome this preventable and treatable disease.



Overcoming poverty and malaria

Bugera Barnabe, program director for The Lutheran World Federation in Burundi, recognizes the deeper issues of malaria and how poverty, food security and malaria are often connected. “In implementing our [other] community programs, we came to see so many people suffering from malaria; so many resources going to malaria. Malaria was taking the time of the people. It was taking the resources of the people. There was no money. When people are sick from malaria they cannot participate in development activities. Malaria takes a big toll.”

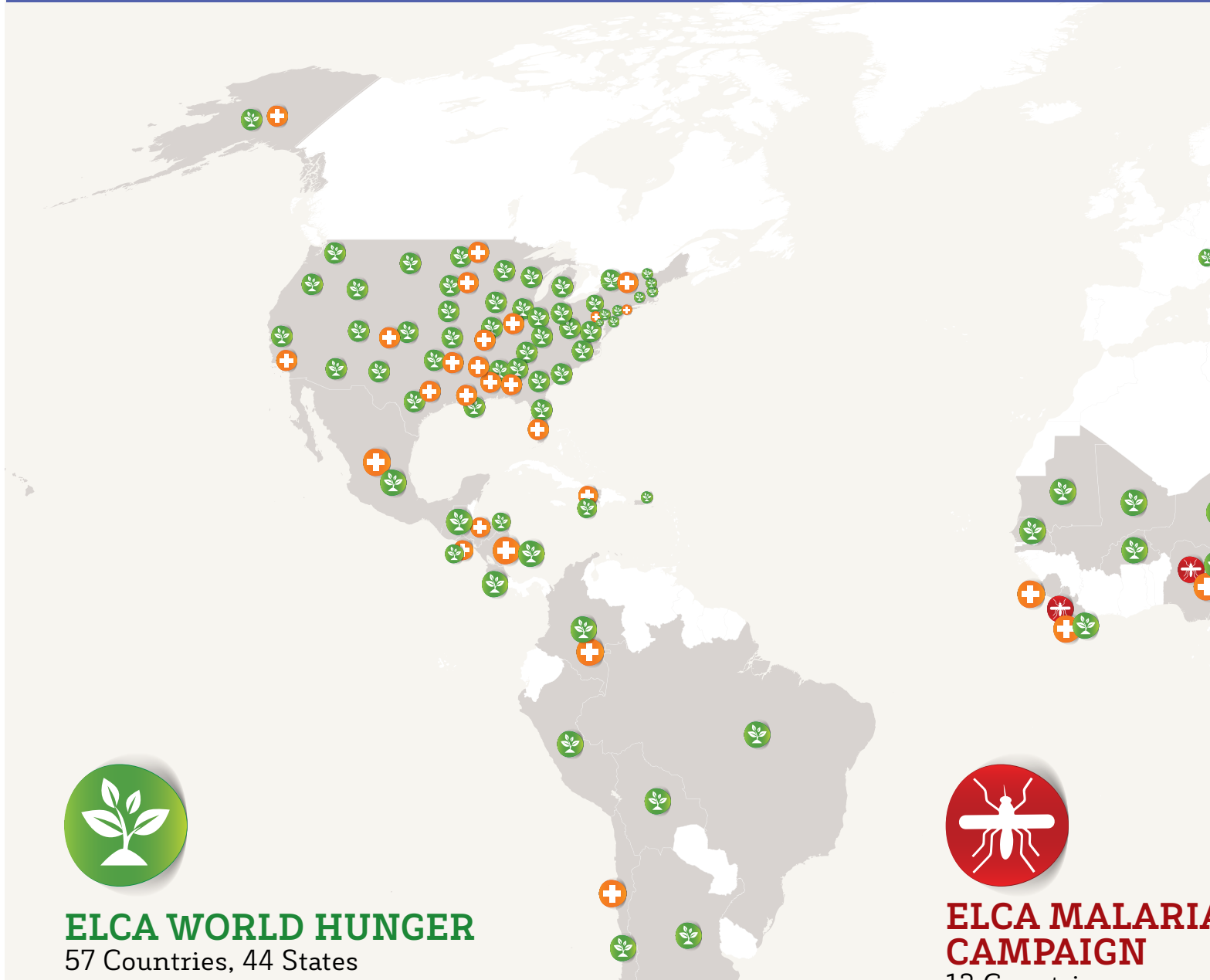
“We thought if we don’t deal with malaria, which is an even more serious problem here than HIV and AIDS, then there will be no community development ever. If we don’t deal with malaria, all other outcomes will be jeopardized completely.”

From the beginning, the ELCA Malaria Campaign has taken a holistic approach in its programming to combat this disease. Malaria programs have provided education, advocacy, medical supplies and created opportunities for people to earn a sustainable income to help reduce the burden of poverty where malaria is prevalent.

Bugera Barnabe gives thanks to the malaria program and has seen first-hand the difference we are making as companions and partners. “I am very encouraged by your support. Already there are positive changes happening. We can look at someone’s house and see evidence of the fight against malaria.” Together we are, “Building the capacity of people in the fight against malaria.”



MAPPING OUR IMPACT



ELCA WORLD HUNGER

57 Countries, 44 States



ELCA MALARIA CAMPAIGN

13 Countries

INTERNATIONAL

- | | | |
|--------------------------|------------|------------------|
| Angola | Haiti | Nigeria |
| Argentina | Honduras | Palestine |
| Bangladesh | Hungary | Papua New Guinea |
| Bolivia | India | Peru |
| Botswana | Indonesia | Philippines |
| Brazil | Japan | Russia |
| Burkina Faso | Kenya | Rwanda |
| Burundi | Lebanon | Senegal |
| Cambodia | Liberia | Singapore |
| Cameroon | Madagascar | South Africa |
| Central African Republic | Malawi | Sudan |
| Chile | Malaysia | Switzerland |
| China | Mali | Tanzania |
| Colombia | Mauritania | Thailand |
| Costa Rica | Mexico | Uganda |
| Egypt | Mozambique | Zambia |
| El Salvador | Myanmar | Zimbabwe |
| Ethiopia | Nepal | |
| Guatemala | Nicaragua | |
| | Niger | |

UNITED STATES AND CARIBBEAN

- | | | |
|----------------------|----------------|----------------|
| Alabama | Massachusetts | South Carolina |
| Alaska | Michigan | South Dakota |
| Arizona | Minnesota | Tennessee |
| California | Mississippi | Texas |
| Colorado | Missouri | Utah |
| Connecticut | Montana | Vermont |
| Delaware | Nebraska | Virginia |
| District of Columbia | New Hampshire | Washington |
| Florida | New Jersey | West Virginia |
| Georgia | New Mexico | Wisconsin |
| Idaho | New York | |
| Illinois | North Carolina | |
| Indiana | North Dakota | |
| Iowa | Ohio | |
| Kansas | Oklahoma | |
| Kentucky | Oregon | |
| Louisiana | Pennsylvania | |
| Maryland | Puerto Rico | |

- | |
|--------------------------|
| Angola |
| Burundi |
| Central African Republic |
| Liberia |
| Malawi |
| Mozambique |
| Namibia |
| Nigeria |
| South Sudan |
| Tanzania |
| Uganda |
| Zambia |
| Zimbabwe |

Your gifts at work



LUTHERAN DISASTER RESPONSE

29 Countries, 17 States

INTERNATIONAL

- | | | |
|-------------------------------------------------------------------------|-------------------------------------------------------------|------------------------------------------------------------|
| Afghanistan
<i>Landslides and Flooding</i> | Haiti
<i>Capacity Building</i> | Nepal
<i>LWF Disaster Hub</i> |
| Bosnia and Herzegovina
<i>Flooding</i> | Honduras
<i>Drought</i> | Nicaragua
<i>Earthquakes and Drought</i> |
| Cameroon
<i>Refugees - Central African Republic</i> | India
<i>Cyclones and Post Asia Tsunami</i> | Nigeria
<i>Conflict-Affected Communities</i> |
| Central African Republic
<i>Conflict-Affected Communities</i> | Indonesia
<i>Post Asia Tsunami</i> | Philippines
<i>Typhoon Haiyan</i> |
| Chad
<i>Refugees - South Sudan</i> | Iraq
<i>Conflict-Affected Communities</i> | Serbia
<i>Flooding</i> |
| Chile
<i>Wildfires</i> | Kenya
<i>Refugee Camps and LWF Disaster Hub</i> | Sierra Leone
<i>Ebola Outbreak</i> |
| Colombia
<i>Flooding</i> | Liberia
<i>Ebola Outbreak</i> | South Sudan
<i>Conflict-Affected Communities</i> |
| El Salvador
<i>Drought and LWF Disaster Hub</i> | Mexico
<i>Flooding, Landslides and Hurricanes</i> | Uganda
<i>Refugees - South Sudan</i> |
| Ethiopia
<i>Refugees - South Sudan</i> | Namibia
<i>Drought</i> | Zambia
<i>LWF Disaster Hub</i> |

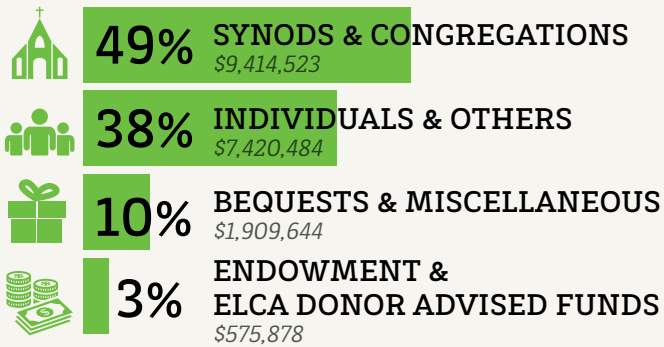
UNITED STATES

- | | |
|--------------------------------------------------|-----------------------------------------------------------------|
| Alabama
<i>Tornadoes and Flooding</i> | Mississippi
<i>Tornadoes</i> |
| Alaska
<i>Flooding</i> | Missouri
<i>Flooding</i> |
| Arkansas
<i>Tornadoes</i> | New Jersey
<i>Hurricane Sandy</i> |
| California
<i>Wildfires</i> | New York
<i>Hurricane Sandy and Flooding</i> |
| Colorado
<i>Wildfires and Flooding</i> | North Dakota
<i>Tornadoes</i> |
| Florida
<i>Flooding</i> | Oklahoma
<i>Tornadoes</i> |
| Illinois
<i>Tornadoes and Flooding</i> | South Dakota
<i>Blizzards, Tornadoes and Flooding</i> |
| Louisiana
<i>Hurricane Isaac</i> | Texas
<i>Unaccompanied and Migrant Children</i> |
| Maryland
<i>Hurricane Sandy</i> | |

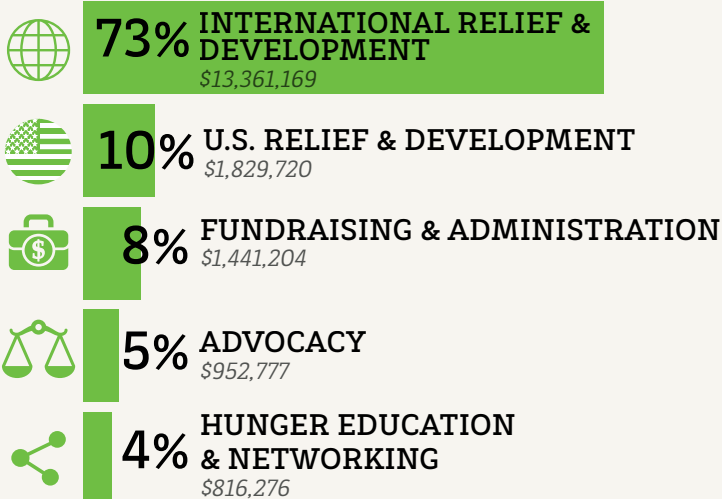


ELCA WORLD HUNGER

REVENUE \$19,320,529

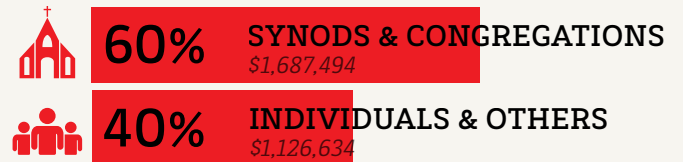


EXPENDITURES \$18,401,146

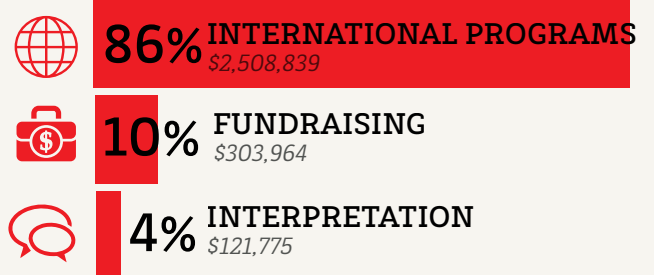


ELCA MALARIA CAMPAIGN

REVENUE \$2,814,128



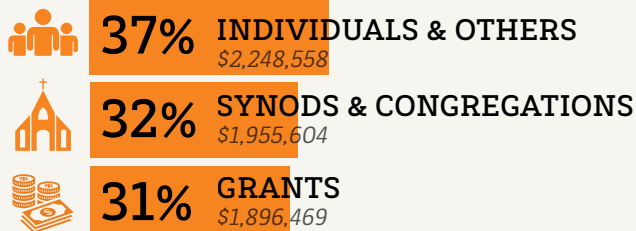
EXPENDITURES \$2,934,578*



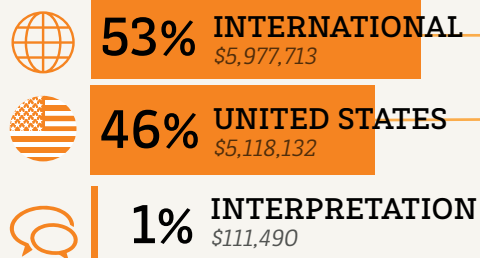


LUTHERAN DISASTER RESPONSE

REVENUE **\$6,100,631**

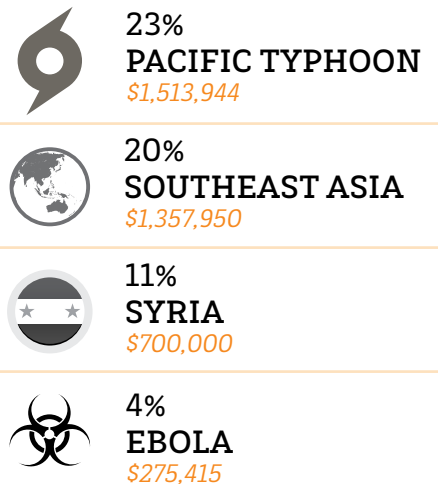


EXPENDITURES **\$11,207,335***

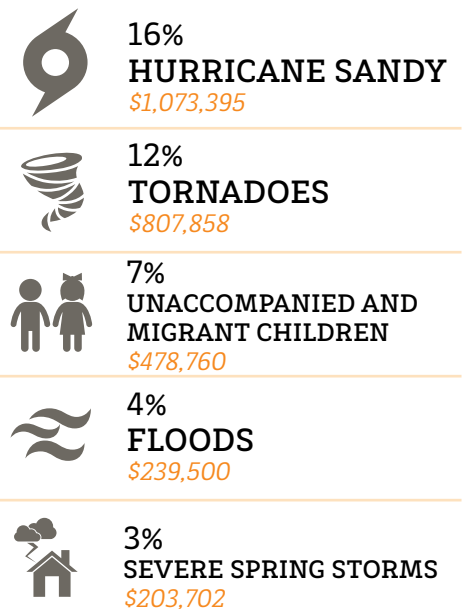


2014 HIGHLIGHTED EXPENDITURES

INTERNATIONAL



UNITED STATES



*All income is expendable only for the purpose to which it is given. Within any one year income and expenditure levels can vary based on the nature and timing of program activities.

Together, we can achieve things
on a scale and scope that
we could never do otherwise.

Thank you for joining us in
the fight to end world hunger.



ELCA
WORLD
HUNGER



ELCA
MALARIA
CAMPAIGN



LUTHERAN
DISASTER
RESPONSE

www.ELCA.org/hunger

LifeLines

For supporters of ELCA World Hunger *Fall 2015*

2014 Year in Review

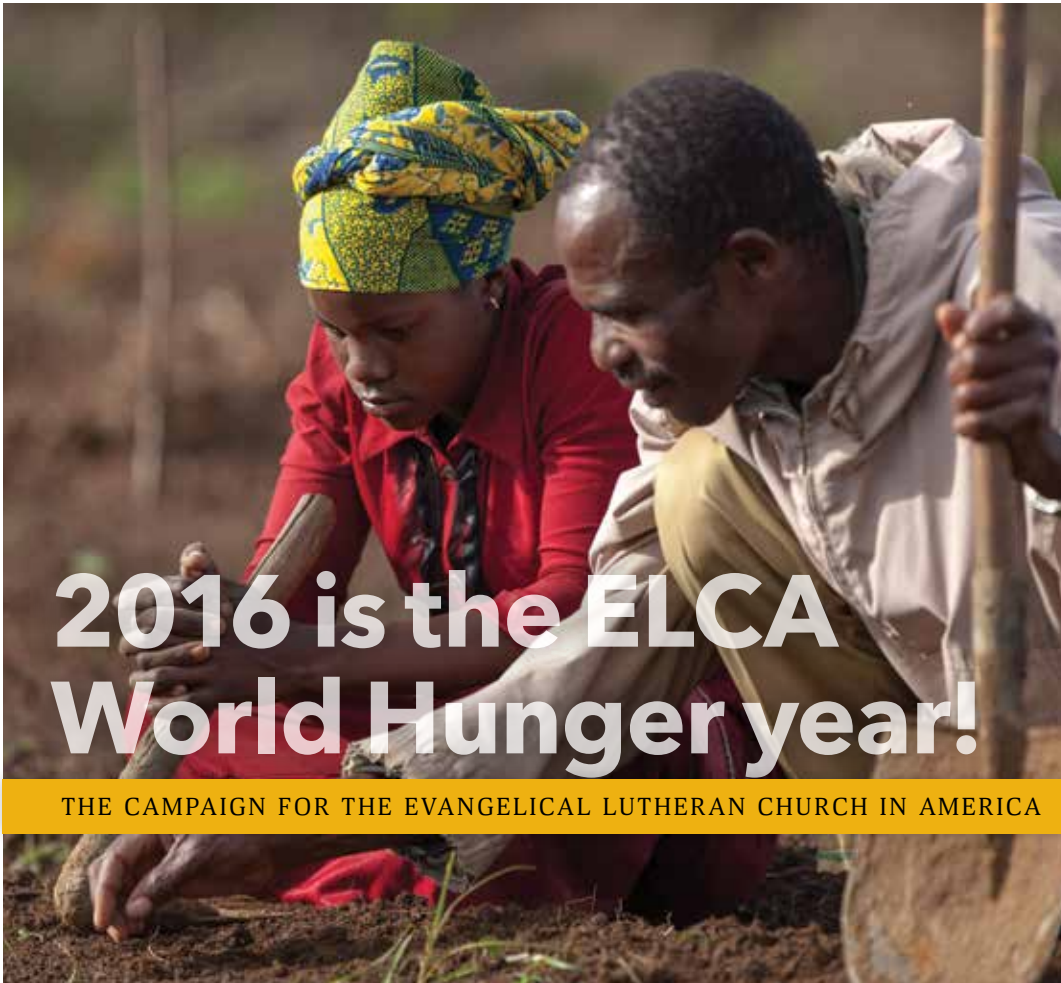
ELCA World Hunger
Evangelical Lutheran Church in America
8765 West Higgins Road
Chicago, Illinois 60631
www.ELCA.org/hunger

NON-PROFIT
STANDARD
U.S. POSTAGE
PAID
UMC



MIX
From responsible
sources
FSC® C005078

ELCAMA1278



2016 is the ELCA World Hunger year!

THE CAMPAIGN FOR THE EVANGELICAL LUTHERAN CHURCH IN AMERICA

Next year marks *Always Being Made New: The Campaign for the ELCA* year-of-emphasis on ELCA Word Hunger.

Join us on a Lenten journey to support and engage in this life-changing work at a new and exciting level.

The journey begins on Sunday, Feb. 7, 2016.

www.ELCA.org/hunger

Always
being made
New.