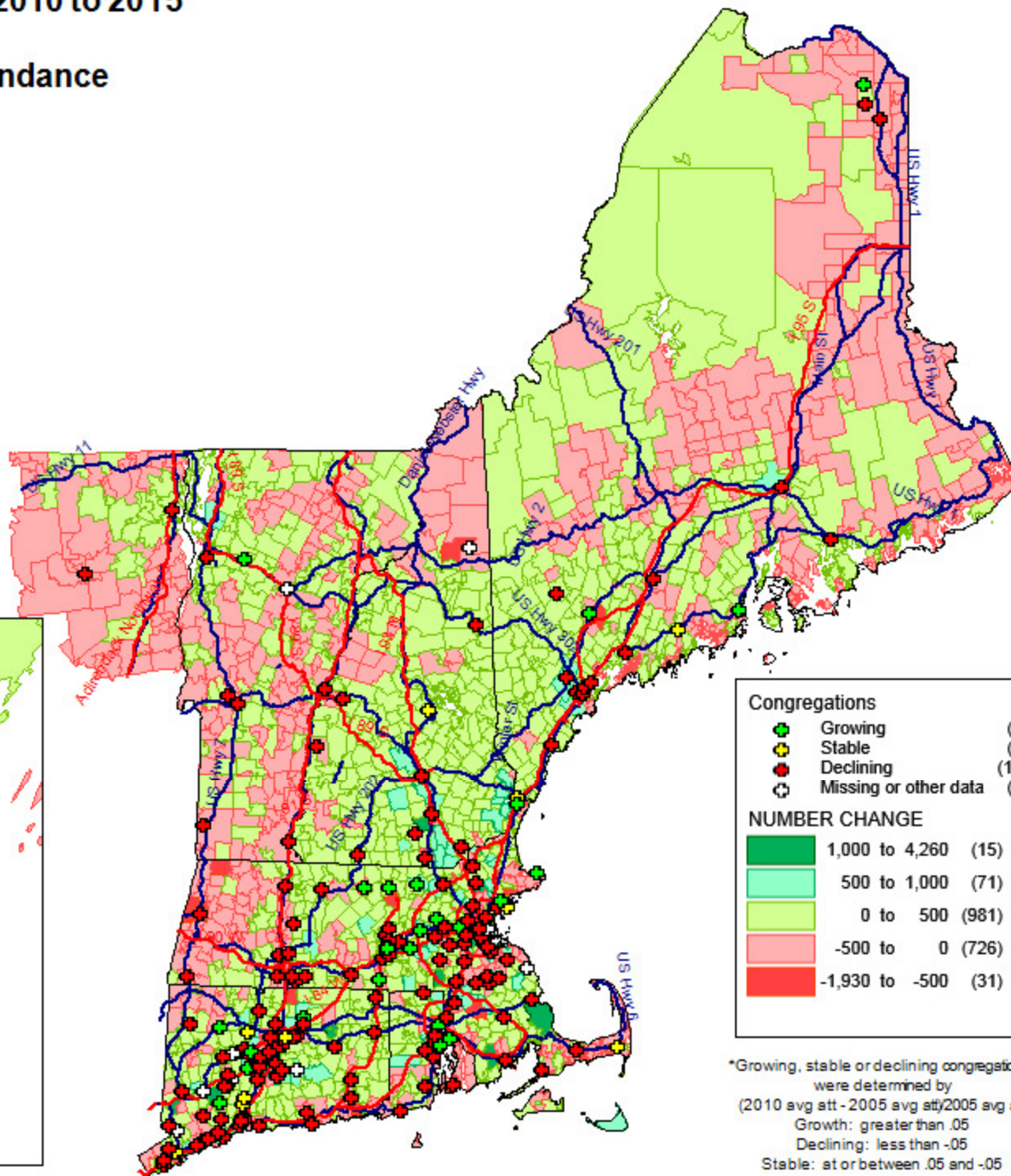
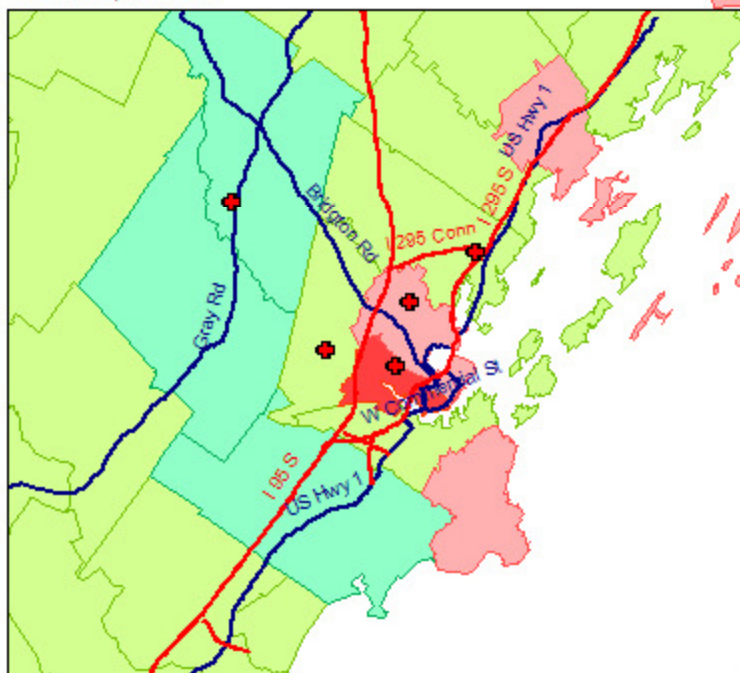


# Projected Change in Population from 2010 to 2015 by ZIP Codes and Change in Congregation Average Attendance from 2005 to 2010 for the New England Synod

Portland, ME Area



Congregations	
	Growing (24)
	Stable (15)
	Declining (137)
	Missing or other data (11)

NUMBER CHANGE	
	1,000 to 4,260 (15)
	500 to 1,000 (71)
	0 to 500 (981)
	-500 to 0 (726)
	-1,930 to -500 (31)

\*Growing, stable or declining congregations were determined by  
(2010 avg att - 2005 avg att)/2005 avg att  
Growth: greater than .05  
Declining: less than -.05  
Stable: at or between .05 and -.05

— State boundary



**Projected Change in Population from 2010 to 2011  
by ZIP Codes and  
Change in Congregation Average Attendance  
from 2005 to 2010  
for Select Areas in the New England Synod**

