



ELCA FUND FOR LEADERS

for this church and for our future

2023-2024



ELCA
Fund for Leaders

ELCA FUND FOR LEADERS

TABLE OF CONTENTS

A Note From the Rev. Marissa Krey, Director, ELCA Fund for Leaders	4
Full-tuition Scholarship Recipients	5
Fed and Sent Out: A Mission Developer at Work	12
Mission Developer Scholarship Recipients	14
Federal Chaplaincy Scholarship Recipient	17
Synod Fund for Leaders Scholarship Recipients	18
Congregation Fund for Leaders Scholarship Recipients	22
Theological Education for Emerging Ministries (TEEM) Fund for Leaders Scholarship Recipients	23
Gratitude for and Acknowledgment of Donors and Partners	25
In Memoriam	29
Numbers for the 2023-2024 Academic Year	30
Thank You: FFL Alums Offer Words of Gratitude	32
Rising to Future Challenges	33
A Note From the Rev. Benjamin A. Hogue	34
Ministry Journeys	35

A NOTE FROM THE REV. MARISSA KREY, DIRECTOR, ELCA FUND FOR LEADERS

“We don’t become leaders by accident.”
—Rev. Kelsey Kresse, 2017 Fund for Leaders scholar

Dear friends,

Ever since we interviewed the Rev. Kelsey Kresse for our 25th anniversary video last year, a particular phrase she used has stuck in my head: “We don’t become leaders by accident.” ELCA Fund for Leaders exists because we know that our church will always need theologically trained pastors and deacons to guide us in showing and sharing Christ’s love in our communities. You — our most faithful supporters — have always known that unless we invest significantly in the education and formation of such leaders, we will not have enough of them in the future. In short: **we don’t produce leaders by accident.**

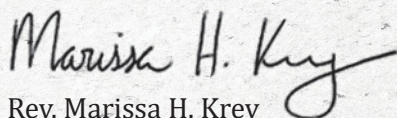
It is no accident that Fund for Leaders supports nearly 350 students each year with over \$3 million in scholarships. Instead, it is the result of intentional generosity from thousands of individuals, congregations and synods. From just eight full-tuition scholarships in the year 2000 to our current five scholarship categories, our methods may have changed over the years, but the goal remains the same.

We know that our work is not yet done. God continues to call the leaders our church needs. The mission of Fund for Leaders will not be complete until we can support each and every one of them, ensuring that they can answer God’s call and begin their service free from the burden of student debt. Yet after 25 years we have much to celebrate!

Last year Fund for Leaders launched its first-ever “FFL Day of Giving,” with great success. In celebration of the 25th anniversary we raised over \$25,000 in just a few days — a record for our ministry. Equally important, our supporters took to social media and shared the impact Fund for Leaders has made in their lives and in the lives of leaders they admire. Now that we’ve repeated the Day of Giving this year, we may have a new tradition on our hands.

I hope you enjoy getting to know this year’s class of scholars. Our full-tuition recipients hail from 23 different synods and attend five different seminaries. Twenty-four of them are studying to be pastors, and six are studying to be deacons. Fifty-three percent will be studying on campus whereas 47% of this year’s class will be learning remotely. Yet wherever they come from and whatever locale they call home for these next few years, they share in common an enormous gratitude for those who made their scholarships possible. They — and I — thank you. Your generosity is a blessing to this church, and the effects of your investment will ripple outward for generations to come.

In deep gratitude,



Rev. Marissa H. Krey
Director, ELCA Fund for Leaders

2023-2024 FUND FOR LEADERS FULL-TUITION SCHOLARSHIP RECIPIENTS

We celebrate with this year's group of called and gifted future leaders. This year 27 new scholarships, totaling \$513,000, are supported by Fund for Leaders general and named endowment funds, valued on June 30, 2023, at \$51,710,706.

MADELYN ANDERSON

Scholarship made possible by the Sara Kramer Wolfe Memorial Scholarship Fund

Synod: Northeastern Iowa

Attending: Lutheran School of Theology at Chicago

Mentor: The Rev. Brian Beckstrom, Assistant Vice President for Mission, Church and Ministry, Valparaiso University, Valparaiso, Ind.

A guiding Bible verse: Philippians 2:1-4

Inspiring biblical figure: *I am deeply inspired by the prophet Anna, whose persistence in worship in the temple allowed her to proclaim the calling of Jesus.*



JUAN ANGEL

Scholarship made possible by the John E. and Marcia F. Grove Memorial Scholarship Fund

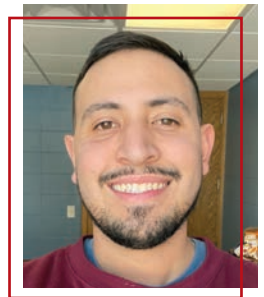
Synod: South Dakota

Attending: Wartburg Theological Seminary

Mentor: The Rev. Aimee Pakan, Associate Pastor, Brandon Lutheran Church, Brandon, S.D.

A guiding Bible verse: Romans 15:4

Inspiring biblical figure: *Peter. When he denies Jesus three times and Jesus comes to him, it shows me how Jesus chooses us and how, even in those moments where we doubt, he is there.*



LEAH BERDAHL

Scholarship made possible by the Paul M. Dauten, Jr. Memorial Endowment Fund

Synod: South Dakota

Attending: Lutheran School of Theology at Chicago

Mentor: The Rev. Matthew Marohl, College Pastor, St. Olaf College, Northfield, Minn.

Guiding Bible verses: Micah 6:8 and Philippians 4:13

Inspiring biblical figure: *The dichotomy of Martha and Mary in Luke 10 is most relatable, as I often find myself navigating the need to act and to listen; there are times when I relate more to Martha and times when I relate more to Mary.*



GRACE BRAUN

Scholarship made possible by the Ben Splichal Larson Memorial Seminary Scholarship Endowment Fund

Synod: Western Iowa

Attending: Wartburg Theological Seminary

Mentor: The Rev. Emily Sauer, Pastor, St. Olaf Lutheran Church, Fort Dodge, Iowa

A guiding Bible verse: Galatians 2:20

Inspiring biblical figure: *One biblical figure that I relate to the most is Moses, because I also had stage fright but was given the strength to lead from God.*



TRESIE CAPE

Scholarship made possible by the Rev. Paul Cobb Seminary Scholarship Endowment Fund

Synod: North Carolina

Attending: Wartburg Theological Seminary

Mentors: The Rev. Paul Carlson and the Rev. Lauren Carlson, Pastors, Calvary Lutheran Church, Morganton, N.C.

A guiding Bible verse: Philippians 4:4-9

Inspiring biblical figure: *I am repeatedly drawn to Esther, as I am inspired by her courage, trust in God, wisdom to use her blessings for God's glory and ability to do what is right to help others.*



MEGAN EPPLEMAN

Scholarship made possible by the Rev. Dr. Richard D. and Mrs. Melba N. Reichard Seminary Scholarship Fund

Synod: Lower Susquehanna

Attending: United Lutheran Seminary

Mentor: The Rev. Danielle "Elle" Dowd, Pastor, South Loop Campus Ministry, Chicago, Ill.

A guiding Bible verse: Matthew 6:7-8

Inspiring biblical figure: *Elizabeth—her faith demonstrates that God can do the impossible, and also that a woman can recognize and support others on her own journey within God's plan.*



JOE GUTIERREZ JR.

Scholarship made possible by the Ascension Lutheran Church Seminary Scholarship Endowment Fund, Garland, Texas

Synod: Southwestern Texas

Attending: Pacific Lutheran Theological Seminary

Mentor: The Rev. Bethany Hull Somers, Pastor, Grace Lutheran Church, San Antonio, Texas

A guiding Bible verse: Micah 6:8

Inspiring biblical figure: *St. Paul greatly inspires me because, after his conversion, he worked, preached, led and greatly affected the church for all time!*



EMILY HAGEN

Scholarship made possible by the Bishop Mark S. Hanson Fund for Leaders Scholarship Fund

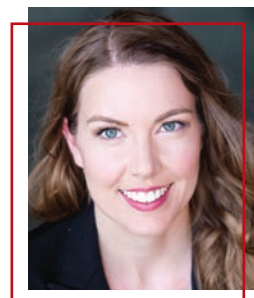
Synod: Saint Paul Area

Attending: Luther Seminary

Mentor: Dr. Mark Slaughter, Minister of Worship Arts, Prince of Peace Lutheran Church, Burnsville, Minn.

A guiding Bible verse: Philippians 4:13

Inspiring biblical figure: *As a musician and a person of faith, I connect deeply with Mary's "Magnificat"; as with her, the opportunity to serve God leaves me both deeply humbled and filled with joy.*



JASON HARBECK

Scholarship made possible by the Erik and Barbara Stone Seminary Scholarship Endowment Fund

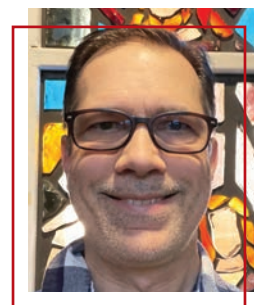
Synod: Metropolitan Chicago

Attending: Wartburg Theological Seminary

Mentor: David Ford, Academic Dean, Alberta Bible College, Calgary, Alberta, Canada

A guiding Bible verse: Luke 2:49

Inspiring biblical figure: *The unnamed father of a spirit-possessed boy in Mark 9:14-29, because although I believe Jesus is the Messiah, I still struggle with questions and doubts, fears and frustrations, which may never be fully resolved this side of paradise.*



EMMA JANZEN

Scholarship made possible by the Ruth Walker Holliday Memorial Seminary Scholarship Endowment Fund

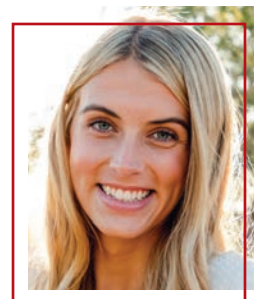
Synod: Grand Canyon

Attending: Wartburg Theological Seminary

Mentor: The Rev. Colleen Windham-Hughes, Professor, California Lutheran University, Thousand Oaks, Calif.

A guiding Bible verse: Matthew 22:35-40

Inspiring biblical figure: *I am inspired by Jairus; his faith allows him to find strength and hope in a time when it could have been easy for him to turn away from faith.*



DAVID LEWIS

Scholarship made possible by the Earl L. Mummert Memorial Endowment Fund

Synod: Metropolitan Washington, D.C.

Attending: United Lutheran Seminary

Mentor: The Rev. Meredith Lovell Keseley, Senior Pastor, Abiding Presence Lutheran Church, Burke, Va.

A guiding Bible verse: Micah 6:8

Inspiring biblical figure: *Naomi, mother-in-law of Ruth; she keeps moving forward with cleverness and resilience after grief and loss.*



RACHEL MCWHIRTER

Scholarship made possible by the Elsa Schulz Pierce Seminary Scholarship Fund

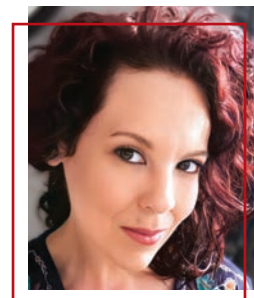
Synod: Texas-Louisiana Gulf Coast

Attending: Wartburg Theological Seminary

Mentor: The Rev. Sergio Edson Rodriguez, Pastor for Community Ministries, Christ the King Lutheran Church, Houston, Texas

A guiding Bible verse: 1 Corinthians 16:14

Inspiring biblical figure: *Miriam is a symbol of strength and resilience, and her story teaches courage and faithfulness, as she was instrumental in leading the Israelites out of slavery. I find that relatable, as I was able to move our church online and keep worship going during the COVID pandemic.*



GRACE OLSON

Scholarship made possible by the Rev. Harold and Rachel Goers Seminary Scholarship Fund

Synod: Northwest Synod of Wisconsin

Attending: Wartburg Theological Seminary

Mentor: The Rev. Jamie Brieske, Pastor, Immanuel Lutheran Church, Eau Claire, Wis.

A guiding Bible verse: Luke 12:32

Inspiring biblical figure: *The hemorrhaging woman, a profound leader and miraculous woman who touched Jesus even when others would have told her not to.*



NICHOLAS ORTH

Scholarship made possible by the Padley Family Seminary Scholarship Fund

Synod: Pacifica

Attending: Luther Seminary

Mentor: The Rev. Gerald Sharon, Pastor, Hope Lutheran Church, Palm Desert, Calif.

A guiding Bible verse: Philippians 2:13

Inspiring biblical figure: *I would have to choose Job, a man who had deep struggles but always depended on God. He knew what it was to have faith in any storm, and that God was consistently present.*



ALLISON OVERLY-STOKES

Scholarship made possible by the Margarete Ursula Nitschke Seminary Scholarship Endowment Fund

Synod: Grand Canyon

Attending: United Lutheran Seminary

Mentor: Ms. Carol Staffieri, Spiritual Director, Grace Lutheran Church, Phoenix, Ariz.

A guiding Bible verse: John 3:30

Inspiring biblical figure: *Moses is most relatable to me because he doubted himself in so many ways but God still used him.*



HANNAH PETERSON

Scholarship made possible by the Omer G. and Annabelle K. Voss Family Donor Advised Fund

Synod: Metropolitan Chicago

Attending: Lutheran School of Theology at Chicago

Mentor: The Rev. Jen Rude, Campus Minister, Pacific Lutheran University, Tacoma, Wash.

A guiding Bible verse: Hebrews 12:1-2

Inspiring biblical figure: *My namesake, Hannah, is both inspiring and relatable—she snuck to the temple and prayed so insistently she was called “crazy” by the priest but eventually received what she prayed for.*



JAROD QUIRING

Scholarship made possible by the Bryn, Nicholas and Betty Ziemendorf Seminary Scholarship Fund

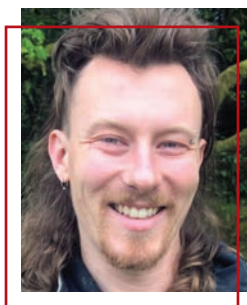
Synod: Sierra Pacific

Attending: Pacific Lutheran Theological Seminary

Mentor: The Rev. Lynn Hubbard, Pastor, Grace Good Shepherd Church, McKinleyville, Calif.

A guiding Bible verse: Luke 9:49-50

Inspiring biblical figure: *The biblical figure who inspires me and whom I find most relatable is the prophet Jonah.*



KATHLEEN ROBINSON

Scholarship made possible by the Alice D. Hillstrom Legacy Endowment Fund

Synod: East-Central Synod of Wisconsin

Attending: Wartburg Theological Seminary

Mentor: The Rev. Karoline Schwantes, Pastor, St. Stephen Lutheran Church, Wausau, Wis.

A guiding Bible verse: John 20:21-22

Inspiring biblical figure: *I find Peter to be most relatable because he wasn't perfect, and even though he denied knowing Jesus, we learn from Peter that leaders and those who teach others about Jesus do not get discouraged when they fail, but they carry on and try to do better next time.*



TEAGAN SHUMAKER

Scholarship made possible by the Marvin D. Anderson Tuition Legacy Fund

Synod: Southwestern Minnesota

Attending: Pacific Lutheran Theological Seminary

Mentor: The Rev. Adam Butler, Pastor, Trinity Lutheran Church, Long Lake, Minn.

A guiding Bible verse: Romans 15:13

Inspiring biblical figure: *The biblical figure that inspires me the most is Ruth with her resiliency, conviction and humble leadership.*



ADELE STUEVER

Scholarship made possible by the Lester Eugene Gyllstrom II Seminary Scholarship Fund

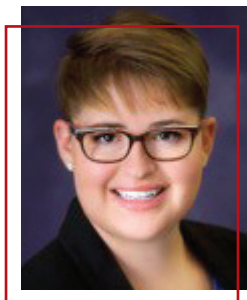
Synod: North/West Lower Michigan

Attending: Lutheran School of Theology at Chicago

Mentor: The Rev. Haley Vay Beaman, Associate Pastor, University Lutheran Church, East Lansing, Mich.

Guiding Bible verses: Psalm 146:7 and Revelation 22:13

Inspiring biblical figure: *I have long looked up to Miriam's example of sisterly love, confidence and cunning in the face of life-threatening danger.*



KRISTI SWANSON

Scholarship made possible by the Raymond and Ruth Schultz Christian Education Fund

Synod: Southeastern Iowa

Attending: Wartburg Theological Seminary

Mentor: The Rev. Sarah R. Cordray, Senior Pastor, Luther Memorial Church, Syracuse, Neb.

A guiding Bible verse: Romans 12:2

Inspiring biblical figure: *I have always related to Martha because, like her, I would take care of the work first, then you can move on to other things.*



RODNEY THOMPSON

Scholarship made possible by the Marius and Cora Newell Titterud Memorial Endowment Fund

Synod: Northwestern Minnesota

Attending: Wartburg Theological Seminary

Mentor: The Rev. Mary Suomala Folkerds, Senior Pastor, Lutheran Church of the Good Shepherd, Moorhead, Minn.

A guiding Bible verse: Matthew 25:35-40

Inspiring biblical figure: *The apostle Paul inspires me with his transformation from a persecutor of Christians to a passionate follower of Christ, his tireless work in establishing churches and spreading the gospel, and his ability to endure persecution, imprisonment and hardship.*



KAYLEE VANCE

Scholarship made possible by the Rev. Tom and Sherry Slater Seminary Scholarship Fund

Synod: Florida-Bahamas

Attending: Luther Seminary

Mentor: The Rev. Derek M. Hoven, Pastor, Salem Lutheran Church, Orlando, Fla.

A guiding Bible verse: Romans 12:3-13

Inspiring biblical figure: *Abigail's story in 1 Samuel inspires me to be courageous, intelligent and generous in the pursuit of integrity and peace.*



JESSY VERA

Scholarship made possible by the Rev. Arne Strandjord Memorial Endowment Fund

Synod: Southeastern Iowa

Attending: Luther Seminary

Mentor: The Rev. Steve Lundblom, Senior Pastor, Our Redeemer's Lutheran Church, Williston, N.D.

A guiding Bible verse: James 4:8

Inspiring biblical figure: *Peter—he had one of the most infamous failures in all of history with his denial of Jesus yet is still the rock that Jesus built the church upon.*



ALICIA WILSON

Scholarship made possible by the Rev. Joseph and Claudia Wagner Seminary Scholarship Fund

Synod: Grand Canyon

Attending: Pacific Lutheran Theological Seminary

Mentor: The Rev. Emily Papke-Larson, Chaplain, Lutheran Campus Ministry, Bemidji State University, Bemidji, Minn.

A guiding Bible verse: Luke 1:46-55

Inspiring biblical figures: *The disciples; I hear the questions they asked and the ways they followed Jesus to be faithful and flawed, making the following of Christ a human and possible endeavor for all of us.*



KAYLA ZOPFI

Scholarship made possible by the Mr. and Mrs. Peter, William and Esther Herlein Fund

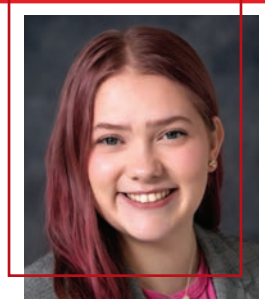
Synod: Minneapolis Area

Attending: Wartburg Theological Seminary

Mentor: The Rev. Kim Adams, Campus Pastor, Concordia College, Moorhead, Minn.

A guiding Bible verse: Isaiah 60:1

Inspiring biblical figures: *The restless curiosity of the magi, which pulls them into adventure and exploration, inspires me to continue leaning into theological praxis.*



JAMIL ZOUGHBI

Scholarship made possible by the ELCA Fund for Leaders

Synod: Upstate New York

Attending: Wartburg Theological Seminary

Mentor: The Rev. Bohdan Vadis, Senior Pastor, Tierrasanta Lutheran Church, San Diego, Calif.

A guiding Bible verse: Matthew 28:19

Inspiring biblical figure: *King David, a person who was named "a man after God's own heart." I always admire this biblical figure for being a man of prayers and longing to God all the time and under any situation. Even when David sinned, he knew where to have refuge, in God.*



FED AND SENT OUT: A MISSION DEVELOPER AT WORK



When the Rev. Matt Shapton began his first call, he didn't have an office in a church building or even an established congregation to serve. What he did have was a golf cart, which he rode around downtown Babcock Ranch, Fla., in his clerical collar and stole, offering communion to his new neighbors.

His wasn't a traditional way of starting a church, but that was by design. Matt wanted to help create something new, in a new way.

Matt became interested in mission development while he was studying at Wartburg Theological Seminary in Dubuque, Iowa. The idea of building new missions from the ground up appealed to him. Before discerning his call to ministry, he had a career as a skilled tradesman and small business owner. He identifies as self-driven, with an entrepreneurial spirit, saying, "I like having the ability to change the narrative a little."

When he chose to concentrate on mission development, the staff at Wartburg nominated him to receive a \$10,000 Mission Developer Scholarship from ELCA Fund for Leaders. This special scholarship provides support for students with extraordinary gifts for church-planting,

above and beyond the cost of tuition. Matt was also receiving support from his home congregation, so his Fund for Leaders scholarship relieved some of the financial pressure on that community.

Matt is extremely grateful for the support he received from his church and from the donors who made his Fund for Leaders scholarship possible. "Having this faith community around me — not only in prayer and discernment but also to say, 'You know what? We're going to help you through this, we believe in you, we support you, we trust that it's a good investment for the whole church' — that was the thing that allowed me to take the step."

After graduating from seminary, Matt moved with his wife and four kids to Babcock Ranch in central Florida in hope of starting a new ELCA mission there. The Babcock Ranch website calls it "tomorrow's hometown." Its first residents arrived in 2018, and it is the first solar-powered city in the United States. The ELCA Florida-Bahamas Synod identified it as a good place for a new mission, partly because the city's focus on sustainability aligns with the ELCA's commitment to environmental stewardship.



As a pastor, Matt wanted to grow a ministry that was deeply rooted in the community and that truly met the needs of his neighbors. In winter 2020, during the COVID-19 pandemic, he remembers, “People were just hungry for church. They wanted to be loved on, they wanted to connect.” So he began leading outdoor services in addition to offering communion from his golf cart. He recalls people being brought to tears as they received the eucharist because they hadn’t been to church in so long.

Pastor Matt’s mission, the Community Church, has grown since those initial golf cart days. First the group met for worship in his house; every Sunday he and his wife would move all their living room furniture into their bedroom to clear space for services. Eventually the congregation outgrew the Shaptons’ living room and began renting the gym at the local community center. Matt hopes to construct a permanent church building that can serve the congregation and the wider community.

Worship, he explains, is only a small part of what the Community Church does. “We come here to be fed and sent out.” After Hurricane Ian the congregation collected donations and served meals to people who had been displaced by the storm. Recently the group hosted its third annual Earth Day fair, with everything from food trucks to Smokey the Bear. “We are part of everything that happens in this community,” Matt says.

Pastor Matt is grateful to the supporters of ELCA Fund for Leaders for all the work they have made possible. “Thank you for empowering innovative ministry,” he says. “Thank you for walking alongside people who would not otherwise have the opportunity to be creative — to reenvision what the church looks like for the future.” He hopes that donors such as you will continue to invest in Fund for Leaders and in mission developers, and to spread the word. Your support will strengthen ministries such as the Community Church in the present, and the whole church for years to come.



“Thank you for walking alongside people who would not otherwise have the opportunity to be creative — to reenvision what the church looks like for the future.”

2023-2024 FUND FOR LEADERS

MISSION DEVELOPER SCHOLARSHIP RECIPIENTS

This year 12 scholarships, totaling \$144,000, are being supported by Fund for Leaders Mission Developer named endowment funds, valued on June 30, 2023, at \$3,288,574.

KJELL BAKKEN

Scholarship made possible by the Bjorg Davidson Johannesson Mission Developer Scholarship Fund

Synod: La Crosse Area

Attending: Lutheran Theological Southern Seminary

Mentor: The Rev. Jeff Barrow, Pastor (retired), Lutheran Church of the Good Shepherd, Minneapolis, Minn.

A guiding Bible verse: John 1:38-39

Inspiring biblical figure: *Job's persevering faith in the midst of great suffering is inspiring to me.*



JOSIAH CANTO

Scholarship made possible by the Delilah E. Ross Memorial Endowment Fund

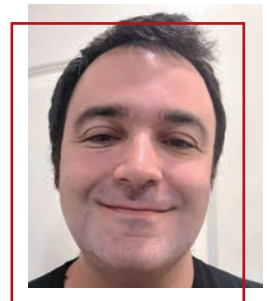
Synod: Pacifica

Attending: Pacific Lutheran Theological Seminary

Mentor: The Rev. Steven Awbrey (retired), Pacifica Synod

A guiding Bible verse: 1 Timothy 4:12

Inspiring biblical figure: *I find Simon Peter relatable because his humanity comes across clearly in the gospels and he was still loved by Jesus and an important part of the church despite his shortcomings.*



SHEMIAH CURRY

Scholarship made possible by the MIF Mission Developers Seminary Scholarship Fund

Synod: Metropolitan Chicago

Attending: Lutheran School of Theology at Chicago

Mentor: Dr. Ina Siler, Faith Point Fellowship Board Liaison, Presbyterian Collegiate Ministries of North Carolina, Greensboro, N.C.

A guiding Bible verse: Isaiah 43:2

Inspiring biblical figures: *The Hebrew midwives Shiphrah and Puah (Exodus 1:8-22), who engaged in holy subversion and saved an entire generation.*



MAX DEL BOSQUE

Scholarship made possible by the MIF Mission Developers Seminary Scholarship Fund

Synod: Southwest California

Attending: Pacific Lutheran Theological Seminary

Mentor: The Rev. Jeremy Serrano, Pastor, Good Shepherd Lutheran Church, Concord, Calif.

A guiding Bible verse: John 4:1-42

Inspiring biblical figure: *Ruth in Ruth 1:16-17 is a queer person that biblically represents the complexities of oppression and diasporic faith experience.*



NATALIE EMPTAGE DOWNS

Scholarship made possible by the Sara E. and John R. Wise Mission Developer Seminary Scholarship Fund

Synod: Southeast Michigan

Attending: Wartburg Theological Seminary

Mentors: The Rev. Kurt Hutchens, Pastor, Zion Chelsea Lutheran Church, Chelsea, Mich., and the Rev. Daniel Quagliata, Pastor, Shalom Lutheran Church, Pinckney, Mich.

A guiding Bible verse: Psalm 62:6

Inspiring biblical figure: *David's devotion to God, creative spirit and bold acts of courage have inspired me in my own faith journey through the hills and valleys of life.*



SARAJEAN GRAINSON

Scholarship made possible by the Rev. P. Richard and Nancy L. Grove Mission Developer Scholarship Fund

Synod: Southeastern Pennsylvania

Attending: United Lutheran Seminary

Mentor: The Rev. Danielle Miller, Senior Pastor, Advent Lutheran Church, New York, N.Y.

A guiding Bible verse: John 8:31-33

Inspiring biblical figure: *Mary Magdalene, who was labeled and marginalized by her peers yet was resilient, loyal, tenacious and the one whom Jesus anointed to tell the good news of his resurrection.*



STEVEN HOYLE

Scholarship made possible by the Rev. Dr. Lauritz and Mrs. Margaret Vigness Mission Developer Scholarship Fund

Synod: North Carolina

Attending: Lutheran Theological Southern Seminary

Mentor: The Rev. David E. Fox, Senior Pastor, Gloria Dei Lutheran Church, Hampton, Va.

A guiding Bible verse: John 1:14

Inspiring biblical figure: *Thomas was both uncertain and faithful. He continued seeking, searching and asking.*



JONATHAN KIEL

Scholarship made possible by the Rev. Dr. Lauritz and Mrs. Margaret Vigness Mission Developer Scholarship Fund

Synod: South-Central Synod of Wisconsin

Attending: Wartburg Theological Seminary

Mentor: The Rev. Carrie Greenquist-Petersen, Associate Pastor, St. Luke's Lutheran Church, Middleton, Wis.

A guiding Bible verse: Romans 8:38-39

Inspiring biblical figure: *I relate to Peter; he is eager but questions, doubts and wonders; Jesus fully and wholly loves him through it all.*



TRENTON ORMSBEE-HALE

Scholarship made possible by the Lois and Gerald Olsen Mission Developer/Redeveloper Scholarship Fund

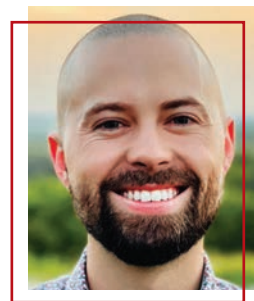
Synod: Northern Texas-Northern Louisiana

Attending: Lutheran School of Theology at Chicago

Mentor: The Rev. Franz Schemmel, Pastor, Messiah Lutheran Church, Weatherford, Texas

A guiding Bible verse: Acts 11:1-18

Inspiring biblical figure: *Peter; he always seems to miss the point and is a little too brash, yet is deeply loved and called into ministry by Jesus.*



JASON REED

Scholarship made possible by the George and Frances Cornell Family Mission Developer Seminary Scholarship Fund

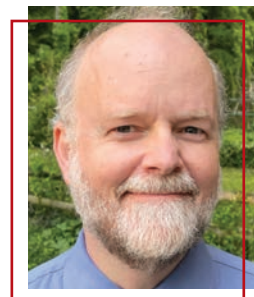
Synod: New Jersey

Attending: Wartburg Theological Seminary

Mentor: The Rev. Lauren Applegate, Pastor, New Life Lutheran Church, New Tripoli, Penn.

A guiding Bible verse: Luke 24:13-36

Inspiring biblical figure: *The unnamed Samaritan woman in John 4, who, after talking with Jesus about the living water, leaves her water jar and becomes herself a doubting, flawed vessel filled with his living water to be poured out for others.*



JAREN SUMMERS

Scholarship made possible by the MIF Mission Developers Seminary Scholarship Fund

Synod: Indiana-Kentucky

Attending: Trinity Lutheran Seminary

Mentor: The Rev. Jerry O'Neal, Holy Trinity Lutheran Church, Muncie, Ind.

A guiding Bible verse: Genesis 32:22-32

Inspiring biblical figure: *I relate to Jacob because he wrestled with God and walked away blessed and with a limp; this mirrors my own faith journey of wrestling with God and walking away blessed.*



QUENTIN SURACE

Scholarship made possible by the Helen S. and Earl Randolph Hessler Jr. Family Mission Developer Scholarship Fund

Synod: North Carolina

Attending: Lutheran Theological Southern Seminary

Mentor: The Rev. Justin Nickel, Assistant Professor of Lutheran Studies, Lutheran Theological Southern Seminary, Columbia, S.C.

A guiding Bible verse: Exodus 3:1-22

Inspiring biblical figure: *AThe biblical figure whom I find most relatable is Moses; we all respond to our vocations as unworthy, but God does not stop inviting us to come, see and join.*



2023-2024 FUND FOR LEADERS

ELCA FEDERAL CHAPLAINCY SCHOLARSHIP RECIPIENT

This year one scholarship, totaling \$15,000, is being supported by Fund for Leaders Federal Chaplaincy Ministry named endowment funds, valued on June 30, 2023, at \$1,115,661.

WILLIAM NEGRON

Scholarship made possible by the Colonel Robert A. Williamson MD Scholarship

Synod: Southeastern Iowa

Attending: Luther Seminary

Mentor: The Rev. Ritva Williams, Pastor, St. Stephen's Lutheran Church, Cedar Rapids, Iowa

A guiding Bible verse: Matthew 25: 35-40

Inspiring biblical figure: *Moses when he says, "Please, Lord, I have never been eloquent, neither recently nor in time past, nor since You have spoken to Your servant; for I am slow of speech and slow of tongue" (Exodus 4:10 NASB).*



The ELCA Federal Chaplaincies Fund for Leaders Scholarship supports those called to nurture our service members, our veterans and those in federal corrections and law enforcement.

A CALLING WITHIN A CALLING

Since the beginning of U.S. history, chaplains have served with distinction. Today that same service continues through our women and men who serve as pastors in the military and in federal agencies. The ELCA provides chaplains to:

- The U.S. Armed Forces.
- Veterans Administration hospitals.
- Federal correctional institutions.
- Other federal agencies.

These individuals bring the hope, help and healing of Christ to service members, veterans and the imprisoned.

2023-2024 SYNOD

FUND FOR LEADERS SCHOLARSHIP RECIPIENTS

This year 191 scholarships, totaling \$655,591, are being supported by the Fund for Leaders synod endowment funds, valued on June 30, 2023, at \$18,555,321.

REGION 1

Northwest Washington Synod Fund for Leaders (1B)

Luther Seminary

Katrina Bensen Orion Gudgell
Bobbi Cyr David Horton
Angela Czarnik-Neimeyer Arlene Smith

Pacific Lutheran Theological Seminary

Salvador Cossio Sharon DeGraw

Northwest Intermountain Synod Fund for Leaders (1D)

Luther Seminary

Lori Tharp

Pacific Lutheran Theological Seminary

Robert Andrew Hamblen Amy Sperline

Wartburg Theological Seminary

Christopher Edsall

Oregon Synod Fund for Leaders (Allert) (1E)

Pacific Lutheran Theological Seminary

Elizabeth Hofrichter Andrew Ross
Jessica Ingman

Montana Synod Fund for Leaders (1F)

Luther Seminary

Kristin La Ve' Carlos Ramalho
Colter McCarty

Wartburg Theological Seminary

Riley Anderson-Reed Baird Linke
Shawn Juers

REGION 2

Pacifica Synod Fund for Leaders (2C)

Luther Seminary

Nicholas Orth

Pacific Lutheran Theological Seminary

Josiah Canto Michelle Kuan-Yang
Keegan Cheleden Perla Flores Ruiz
Michelle Kuan-Yang Josefina Villalpando Paredes

United Lutheran Seminary

Jonathan Kieffer

Grand Canyon Synod Fund for Leaders (2D)

Luther Seminary

Tatianna Heinreich Ann Emilie Tjorhom
Yvonne Roesel

Lutheran School of Theology at Chicago

Carly Chamberlain Gail Kenny

Pacific Lutheran Theological Seminary

Kevin Anderson Judith Wold
Wanda Frenchman

Wartburg Theological Seminary

Daniel Volkmann

The Santa Cruz Sunrise Multi-Cultural Fund for Leaders Endowment Fund (2D)

Lutheran Theological Southern Seminary

Louis Liss

Wartburg Theological Seminary

Zachary Bell-Nance

REGION 3

Western North Dakota Synod Fund for Leaders (3A)

Wartburg Theological Seminary

Peder Stenslie

South Dakota Synod Fund for Leaders (Anderson, Harrington, Ketterling, Wall) (3C)

Luther Seminary

Hannah Fleming Mara Stillson
Nicole Phillips

Wartburg Theological Seminary

Jeremy Haugen

South Dakota Synod Women of the ELCA Fund for Leaders (3C)

Luther Seminary

Hannah Fleming Nicole Phillips

Wartburg Theological Seminary

Wanda Biel

Northwestern Minnesota Synod Fund for Leaders (3D)

Luther Seminary

Elizabeth Monke Jessica Paulsen

Wartburg Theological Seminary

Kyle Conant Katelyn Ohren
Christopher Friese Curtiss Peterson
Ian Heseltine

Southwestern Minnesota Synod Fund for Leaders (Green Lake) (3F)

Luther Seminary

Thomas Bonnema Mara Stillson

Southwestern Minnesota Synod Fund for Leaders (Trinity, Marble) (3F)

Luther Seminary

Kari Shumaker

Pacific Lutheran Theological Seminary

Teagan Shumaker

Wartburg Theological Seminary

Katherine (Kit) Mackenzie

Southwestern Minnesota Synod Lutheran Men in Mission Fund for Leaders (3F)

Luther Seminary

Douglas Dockter Rory Rohloff

Minneapolis Area Synod Fund for Leaders (3G)

Luther Seminary

Mwamini Bundi Rachel Wyffels
Erik Nelson

Saint Paul Area Synod Fund for Leaders (3H)

Luther Seminary

Dana Becker Karla Leitzman
Alison Bondy Nathan Lyke
Karleigh Crepin Jennifer Schneider
Joseph Jorgensen

Wartburg Theological Seminary

Brittany Barkus Katharine Kennedy Spindler
Emily Ronsberg

Southeastern Minnesota Synod Fund for Leaders (3I)

Luther Seminary

Madeline Patterson Katie Weiland

Wartburg Theological Seminary

Ashley Kuhlman Bungjot Nyigow

REGION 4

Nebraska Synod Fund for Leaders (4A)

Wartburg Theological Seminary

Gary Grinvalds Abigail Vetick
Douglas Rothgeb

Ascension Lutheran Church/NT-NL Synod Seminary Scholarship

Lutheran School of Theology at Chicago

Concepcion Ortega

Northern Texas-Northern Louisiana Synod Fund for Leaders (4D)

Lutheran School of Theology at Chicago

Olivia Riddle

United Lutheran Seminary

Jessica Nipp

Wartburg Theological Seminary

Brady Fox

REGION 5

Metropolitan Chicago Synod Fund for Leaders (5A)

Lutheran School of Theology at Chicago

Catherine Abihudi Sharei Green
Timothy Geistlinger Derek Stienmetz

Wartburg Theological Seminary

Luisa Oliver

Northern Illinois Synod Fund for Leaders (5B)

Wartburg Theological Seminary

Leslie Aska

Southeastern Iowa Synod Fund for Leaders (5D)

Luther Seminary

Anna Smolik Hagen Jessy Vera
Aaron Schutte

Lutheran School of Theology at Chicago

Elizabeth Kuster

Wartburg Theological Seminary

Madison Carroll Kristi Swanson
Lotegeluaki Lengai Britany Thorpe
Daniel Luepke

Western Iowa Synod Fund for Leaders (5E)

Wartburg Theological Seminary

Grace Braun

Northeastern Iowa Synod Fund for Leaders (5F)

Wartburg Theological Seminary

Christopher Anderson Lisa Robison
Elizabeth Hurt Brittney Shipman
Laurie Iudin-Nelson ChyAnne Slick
Craig Moss

Northern Great Lakes Synod Fund for Leaders (5G)

Wartburg Theological Seminary

Lance Crevier

Northwest Synod of Wisconsin Fund for Leaders (5H)

Luther Seminary

John Addison Catherine Reuter
Dana Paulsen Donald Rosenberry

Wartburg Theological Seminary

Jessica Dragseth

South-Central Synod of Wisconsin Fund for Leaders (5K)

Wartburg Theological Seminary

Juan Cabrera

La Crosse Area Synod Fund for Leaders (5L)

Luther Seminary

Kristen Arends

Lutheran Theological Southern Seminary

Kjell Bakken

REGION 6

**Southeast Michigan Synod Women of the ELCA
Fund for Leaders (6A)**

Luther Seminary

Alysa G. Offman

Wartburg Theological Seminary

Natalie Emptage Downs

North/West Lower Michigan Synod Fund for Leaders (6B)

Luther Seminary

Megan Floyd

Indiana-Kentucky Synod Fund for Leaders (6C)

Pacific Lutheran Theological Seminary

Sherilyn Kindig

Wartburg Theological Seminary

Laura Applegate

Northwestern Ohio Synod Fund for Leaders (6D)

Luther Seminary

Gregory Brown David O'Brien
Paula Cleaver

Pacific Lutheran Theological Seminary

Steven Basselman

Wartburg Theological Seminary

Jacinda Jones

REGION 7

**New Jersey Synod Fund for Leaders
(Advent Lutheran Church) (7A)**

United Lutheran Seminary

Kim Syvertsen

New England Synod Fund for Leaders (7B)

Luther Seminary

Amy Dunckelmann Jacey Glass

New England Synod Fund for Leaders (7B)

United Lutheran Seminary

Gail Angellis Jeanette Harris

New England Synod Fund for Leaders (7B)

Wartburg Theological Seminary

Rosa Radcke

**Lutheran Theological Seminary at Philadelphia/
Metropolitan New York Synod Fund for Leaders (7C)**

United Lutheran Seminary

John Evans

Metropolitan New York Synod Fund for Leaders (7C)

Wartburg Theological Seminary

Lindsay Fertig-Johnson

**Metropolitan New York Synod Fund for Leaders/
Dr. John G. Huneke (7C)**

United Lutheran Seminary

June Daniel-Bradshaw Deivis Ventura
John Evans

Upstate New York Synod Fund for Leaders—Schwartz (7D)

United Lutheran Seminary

Melissa Bedell Rachel Sosebee

Upstate New York Synod Fund for Leaders (7D)

Lutheran School of Theology at Chicago

Elisabeth Preisinger

United Lutheran Seminary

Diana Foote Teresa O'Connor

**Northeastern Pennsylvania Synod Fund for Leaders
(Holy Spirit Lutheran Church) (7E)**

Luther Seminary

Ashley Teter

Lutheran Theological Southern Seminary

David Corrado

United Lutheran Seminary

MaryAnn Farnsworth Christopher Schomaker

Jayne Leh Heidi Shilanskas

Tyler Rankin

Rev Dr Samuel R and Linda L Zeiser Seminary Scholarship

United Lutheran Seminary

Brynn Anderson Jayne Leh

Joshua Labadie-Gulotta April Mulvey

**The Lutheran Theological Seminary at Philadelphia–
Southeastern Pennsylvania Synod Fund for Leaders (7F)**

United Lutheran Seminary

Connor Watson

REGION 9

Virginia Synod Fund for Leaders (9A)

Luther Seminary

Chad Crowley

Lutheran School of Theology at Chicago

Jayne Kokkonen

Lutheran Theological Southern Seminary

Lynette McSpadden

United Lutheran Seminary

Brianna Riley Andrew Taminger

North Carolina Synod Fund for Leaders (9B)

Lutheran Theological Southern Seminary

Rahim Brown Rachael Theisen

Matthew Hansen

Wartburg Theological Seminary

Treesie Cape

Elizabeth Miller

South Carolina Synod Fund for Leaders (9C)

Lutheran Theological Southern Seminary

Joel Antley Zachary Lindler

Benjamin Bernstein Jace Martinez

Olga-Maria Cruz Paula Perry

Laura Henrickson Emily Whitlow

**Rev. H. Julian Gordy Bishop Emeritus, Seminary Scholarship
for Advocacy**

Lutheran Theological Southern Seminary

Candice Clark

Daniel Thompson

Wartburg Theological Seminary

Joshua Moss

Southeastern Synod Fund for Leaders (Skillrud) (9D)

Lutheran School of Theology at Chicago

Laxmikanth Vardhanapu

Lutheran Theological Southern Seminary

Ethan Miller

Daniel Thompson

Pacific Lutheran Theological Seminary

Audra Gehler

United Lutheran Seminary

Ali Clark

Joe Ley

Kevin Compton

Wartburg Theological Seminary

Joshua Moss

Southeastern Synod Women of the ELCA Fund for Leaders (9D)

Pacific Lutheran Theological Seminary

Audra Gehler

Sonya Solomon

United Lutheran Seminary

Allison Luppe

Florida-Bahamas Synod Fund for Leaders (9E)

Pacific Lutheran Theological Seminary

Boris Camille

United Lutheran Seminary

Dori Dunham

**Florida-Bahamas Synod Women of the ELCA Fund for
Leaders (9E)**

Lutheran Theological Southern Seminary

Courtney Noya

ADDITIONAL SYNOD SCHOLARSHIPS

Southwestern Texas Synod Fund for Leaders (4E)

West Virginia-Western Maryland Synod Fund for Leaders (8H)

2023-2024 CONGREGATION FUND FOR LEADERS SCHOLARSHIP RECIPIENTS

This year 12 scholarships, totaling \$44,200, are being supported by Fund for Leaders congregational endowment funds, valued on June 30, 2023, at \$1,599,764.

Abiding Presence Lutheran Church Seminary Scholarship Fund — Burke, Va.

David Lewis — United Lutheran Seminary

Bethlehem Lutheran Seminary Scholarship Fund — Joliet, Ill.

Jamil Zoughbi — Wartburg Theological Seminary

Desert Hills Lutheran Church Seminary Scholarship Fund — Green Valley, Ariz.

Daniel Volkmann — Wartburg Theological Seminary

First Lutheran Church Seminary Scholarship Endowment Fund — Colorado Springs, Colo.

Michaela Eskew — Luther Seminary

Reformation Lutheran Church Seminary Scholarship Fund, Absecon, N.J. (formerly Epiphany Lutheran Church Seminary Scholarship Fund, Pleasantville, N.J.)

Vincent Piekarski — United Lutheran Seminary

Jason Reed — Wartburg Theological Seminary

St John's Lutheran Church Seminary Scholarship Fund — Knoxville, Tenn.

Caitlynne Fox — United Lutheran Seminary

St. Paul's Evangelical Lutheran Church, Doylestown, Pa. — The Rev. Herbert and Lucy Piehler Seminary Scholarship Fund

Juan Carlos Cabrera — Wartburg Theological Seminary

The Rev. Walter E. Wittman Seminary Scholarship Fund/Gloria Dei Lutheran Church — Downers Grove, Ill.

Erik Boss — Lutheran School of Theology at Chicago

Sharei Green — Lutheran School of Theology at Chicago

Trinity Evangelical Lutheran Church Forrest and Betty Reid Scholarship Fund — Moline, Ill.

Trey Graff — Wartburg Theological Seminary

Trinity Lutheran Church Seminary Scholarship Fund — Greenville, S.C.

Patrick Preacher — Wartburg Theological Seminary

ADDITIONAL CONGREGATION FUNDS

This year, scholarship dollars from these funds, totaling \$12,800, are supporting the TEEM Scholarship,* and funds totaling \$2,200 are supporting an M.Div. student scholarship.**

*Advent Lutheran Church Seminary Scholarship Endowment Fund — La Grange, Ga.

**Bethlehem Evangelical Lutheran Church Endowment Fund — Chicago, Ill.

*Edison Park Lutheran Church Nasby-Anderson Seminary Scholarship Fund — Chicago, Ill.

*Our Savior Lutheran Church Seminary Scholarship Fund — Menomonie, Wis.

**The Rev. John Weber Seminary Scholarship Fund/Christ Our Shepherd Lutheran Church — Peachtree, Ga.

Trinity Lutheran Church Seminary Scholarship Endowment Fund — Fort Collins, Colo.

2023-2024

THEOLOGICAL EDUCATION FOR EMERGING MINISTRIES (TEEM) FUND FOR LEADERS SCHOLARSHIP RECIPIENTS

As part of our commitment to support a diverse group of students, Fund for Leaders is again allocating 10% of available (i.e. nonrestricted) funds to TEEM students. This year the TEEM Scholarship awards are \$3,800 each. We celebrate with these 77 called and gifted leaders.

Northwest Washington Synod — 1B

Salvador Cossio

Northwest Intermountain Synod — 1D

Robert Andrew Hamblen

Oregon Synod — 1E

Jessica Ingman

Sierra Pacific Synod — 2A

Michael Basil

Alan Gaston

Southwest California Synod — 2B

Mary Ann Harrison

Maurice Ingram

Jimmie Maggette

Frank Oliver

Wenyang Peter Pan

Keith Youngblood

Pacifica Synod — 2C

Josefina Villalpando Paredes

Wen-Tzao Yang

Grand Canyon Synod — 2D

Guy ilunga

Jarrood Iversen

Solomon Kuch

Rocky Mountain Synod — 2E

Margarita Reyes

Lisa Rygiel

Colleen Teeuwe

Western North Dakota Synod — 3A

Peder Stenslie

Eastern North Dakota Synod — 3B

Richard Bryant

Babs Coler

Janelle Hansen

Phyllis Johnson

Penny Millspaugh

South Dakota Synod — 3C

Wanda Biel

Patricia Schubert

Northeastern Minnesota Synod — 3E

Richard Gabriel

Steven Teff

Nebraska Synod — 4A

Kim Bate

Arkansas-Oklahoma Synod — 4C

Tamarreau Evans

Northern Texas-Northern Louisiana Synod — 4D

Gilbert Rwela

Texas-Louisiana Gulf Coast Synod — 4F

Jadher Abad

Roland Deddeh

Jaime Morales

Metropolitan Chicago Synod — 5A

Catherine Abihudi

Dennis Debrie

Rodger Jones

Philip Wallace

Western Iowa Synod — 5E

Kimberly Campbell

Jonathan Merritt

Northwest Synod of Wisconsin — 5H

Jill Fries

East-Central Synod of Wisconsin — 5I

Amy Penza
Elizabeth Sell
Keith Sorlie

Greater Milwaukee Synod — 5J

Josefa Puerta Villacrez

South-Central Synod of Wisconsin — 5K

Juan Cabrera

Southeast Michigan Synod — 6A

Robert Brannon

Indiana-Kentucky Synod — 6C

Khai Cho
Sherilyn Kindig

Northwestern Ohio Synod — 6D

Steven Basselman

Northeastern Ohio Synod — 6E

Vedyn Wylie

Southern Ohio Synod — 6F

Patricia (Patti) Eaton
Sharon Rasch

New Jersey Synod — 7A

Vincent Piekarski
Philip Scherzer

New England Synod — 7B

Jeanette Harris
Rosa Radcke

Metropolitan New York Synod — 7C

Hoshea Huang

Upstate New York Synod — 7D

Melissa Bedell

Northeastern Pennsylvania Synod — 7E

Michael Snider

Northwestern Pennsylvania Synod — 8A

Roland King

Allegheny Synod — 8C

Christy Harford
Penny Koontz
Claudia Plows
Joshua Spangler

Upper Susquehanna Synod — 8E

Ruth Ann Kephart
Amy Shuck

Delaware-Maryland Synod — 8F

Brian Sanders
Travis Sanders
David Wright

Virginia Synod — 9A

Stephen Povlish

Virginia Synod — 9A

Raymond Riffin

Southeastern Synod — 9D

Audra Gehler
Sonya Solomon

Florida-Bahamas Synod — 9E

Boris Camille
Ignacio Estrada

GRATITUDE FOR AND ACKNOWLEDGMENT OF NEW DONORS AND PARTNERS

We wish to thank all the faithful people, congregations and synods that, from July 1, 2022, to June 30, 2023, gave gifts to the ELCA Fund for Leaders' endowment funds, totaling over \$3.2 million. Your commitment to raising up and supporting leaders is what makes the ELCA Fund for Leaders possible.

We are especially grateful for the following individuals and groups that recently established new named endowment funds. A Fund for Leaders named endowment fund can be established with a gift or multiyear commitment of \$25,000 or more. A full-tuition scholarship, currently valued at \$19,000, can be sustained by an endowment of \$475,000.

NEW ENDOWMENT FUNDS ESTABLISHED

JULY 1, 2022–JUNE 30, 2023

GENERAL

Rev. Joseph and Claudia Wagner Seminary Scholarship Fund
Elsa Schulz Pierce Seminary Scholarship Fund
Reformation Legacy Seminary Scholarship Fund,
Rochester, N.Y.

FEDERAL CHAPLAINCY MINISTRY

St. Michael Lutheran Church Virginia Beach Chaplaincy
Scholarship Fund

CONGREGATION

Fiesta Conference Seminary Scholarship Fund

Endowment fund valuations calculated as of June 30, 2023.

* Endowment Funds that contribute to a variety of ELCA churchwide organization ministries, including Fund for Leaders.

** Endowment funds that support Mission Developer/Redeveloper scholarships, which provide \$12,000 (\$8,000 for TEEM candidates) per year for up to two years.

*** Endowment funds that support Federal Chaplaincy Ministry scholarships, which will provide \$15,000 this year.

ENDOWMENT VALUED

\$1,000,000+

Paul M. Dauten, Jr. Memorial Endowment Fund
John E. and Marcia F. Grove Memorial Scholarship Fund
Mr. and Mrs. Peter, William and Esther Herlein Fund*
MIF Mission Developers Seminary Scholarship Fund**
Omer G. and Annabelle K. Voss Family Donor Advised Fund

**ENDOWMENT
VALUED** | **\$400,000-
\$999,999**

Rev. Olaf A. Berge Memorial Fund
Bethel Lutheran Church Endowment Fund, Chicago, Ill.*
ELCA Federal Chaplaincy Scholarship Fund***
Kenneth and Sandra Falkinham Seminary Scholarship
Endowment Fund
Rev. Milton Gustafson Memorial Endowment Fund
Ruth Walker Holliday Memorial Seminary Scholarship
Endowment Fund
Gunther C. and Johanna W. Holpp Memorial Endowment
Fund*
Orville R. Klopf Memorial Endowment Fund*
E. Marilyn Oberle Seminary Scholarship Endowment Fund
Marius and Cora Newell Titterud Memorial Endowment
Fund
Dr. Adelia E. Weis Memorial Ministerial Scholarship Fund*
Astrid V. Wilson Memorial Endowment Fund
William D. Wubben Memorial Endowment Fund*

**ENDOWMENT
VALUED** | **\$200,000-
\$399,999**

Rick and Kathy Ambrose Scholarship Endowment Fund
Albert G. and Svea H. Anderson Memorial Fund
Rev. Dr. E. Earl Anderson Seminary Scholarship Fund
Marvin D. Anderson Tuition Legacy Fund
Ascension Lutheran Church Seminary Scholarship
Endowment Fund, Garland, Texas
Doris M. Bagley Fund for Leaders Memorial Endowment Fund
L. Travis and Jean M. Brannon Endowment Fund
Christ Lutheran Church Endowment Fund, Chicago, Ill.*
George and Frances Cornell Family Mission Developer
Seminary Scholarship Fund**
Lester Eugene Gyllstrom II Seminary Scholarship Fund
Alice D. Hillstrom Legacy Endowment Fund*
Max W. and Phyllis Krell Family Seminary Scholarship
Endowment Fund
Lahm Family Seminary Scholarship Fund
Irma K. Lauffer 1999 Memorial
Dr. Oliver A. Muhonen Memorial Endowment Fund*
Portico Benefit Services Seminary Scholarship Endowment
Fund
Carol J. Reed Endowment Fund
Reformation Legacy Seminary Scholarship Fund, Rochester,
N.Y.
Delilah E. Ross Memorial Endowment Fund**
Rev. Donald P. Schneider Seminary Scholarship Fund
Rev. Dr. Lauritz and Mrs. Margaret Vigness Mission
Developer Scholarship Fund**
Colonel Robert A Williamson, M.D. Scholarship***
Rev. Eric Wogen Seminary Scholarship Endowment Fund
J. Binnie Wolfe Memorial Scholarship Fund
Sara Kramer Wolfe Memorial Scholarship Fund

ENDOWMENT VALUED | **\$100,000-
\$199,999**

Rev. Kenneth R. Ahlstrand Seminary Scholarship Endowment Fund
Bishop H. George and Jutta F. Anderson Endowment Fund
Carrie J. Brown Memorial Endowment Fund
Dr. Carol Craig Seminary Scholarship Endowment Fund
Rev. Guy Edmiston Mission Endowment Fund
Erckmann-Miller Seminary Scholarship Fund
First Lutheran Church and Kountze Memorial Lutheran Church Seminary Scholarship, Omaha, Neb.
Rev. Harold and Rachel Goers Seminary Scholarship Fund
George A. and Dorothy L. Johnson Living Legacy Fund*
Imogene Lewin Seminary Scholarship Fund
Charles, Joe Anne, Nan and Al Lintz Scholarship Fund
Lord of Life Lutheran Church Seminary Scholarship Fund, Glenn Heights, Texas
Paul L. and Valerie C. Miller Seminary Scholarship Endowment Fund
Margarete Ursula Nitschke Seminary Scholarship Endowment Fund
Frances and Donna Olson Seminary Scholarship Endowment Fund
Rev. Dr. Richard D. and Melba N. Reichard Seminary Scholarship Fund
Carl E. and Alice E. Schaedel Memorial Endowment Fund
Raymond and Ruth Schultz Christian Education Fund*
Florence E. Von Behren Memorial Endowment Fund*
Sara E. and John R. Wise Mission Developer Seminary Scholarship Fund**

ENDOWMENT VALUED | **\$50,000-
\$99,999**

Rev. Dr. Phyllis Anderson Seminary Scholarship Endowment Fund
Rev. Victor L. Brandt Seminary Scholarship Fund
Rev. Paul Cobb Seminary Scholarship Endowment Fund
Cox Memorial Scholarship Endowment Fund
Bjorg Davidson Johannesson Mission Developer Scholarship Fund**
Merlin Flesner Memorial Endowment Fund*
Mildred A. Flotow Memorial Endowment Fund*
Van and Linnea Grosse Seminary Scholarship Fund
Rev. P. Richard and Nancy L. Grove Mission Developer Scholarship Fund**
Earl L. Mummert Memorial Endowment Fund
Lois and Gerald Olsen Mission Developer/Redeveloper Scholarship Fund**
Eddie H. Olson and Donald L. Olson Memorial Endowment Fund*
Rev. Elizabeth A. Platz Seminary Scholarship Fund
A. Craig Settlege Memorial Scholarship Endowment Fund
Rev. Tom and Sherry Slater Seminary Scholarship Fund
St John's Evangelical Lutheran Church Seminary Scholarship Fund
Erik and Barbara Stone Seminary Endowment Fund
Swanson Family Seminary Scholarship Endowment Fund
David D. and Barbara A. Swartling Seminary Scholarship Fund
Gerald and Marihope Troutman Scholarship Fund
Corrine Wehvilainen Memorial Endowment Fund*
Elizabeth K. Weisburger Mission Developer Seminary Scholarship Fund**
Bryn, Nicholas, and Betty Jane Ziemendorf Seminary Scholarship Fund

ENDOWMENT VALUED | **\$25,000- \$49,999**

Abiding Savior Lutheran Church Seminary Scholarship, Independence, Mo.

Jutta F. Anderson Seminary Scholarship Fund

George and Martha Benson Memorial Endowment Fund

Howard and Marie Cleer Seminary Scholarship Endowment Fund

ELCA Seminary Presidents Fund for Leaders

Iveda C. and Christen H. Evanson Seminary Scholarship Fund

Rev. Murray D. and Rhoda M. Finck Federal Chaplaincy Seminary Scholarship Fund***

Bishop Mark S. Hanson Fund for Leaders Scholarship Fund

Helen S. and Earl Randolph Hessler Jr. Family Mission Developer Scholarship Fund**

Reverend Ivan and Kathryn Ives Federal Chaplaincy Seminary Scholarship***

Ben Splichal Larson Memorial Seminary Scholarship Endowment Fund

Rev. Dr. Duane Larson and Dr. Joen Larson Seminary Scholarship

Rev. Scottie & Karen Lloyd Chaplaincy Seminary Scholarship***

Arthur and Vera Mabis Endowment Fund*

Rev. Earlean Miller Seminary Scholarship Fund

Rev. Stanley E. Olson Mission Developer Seminary Scholarship Fund**

Our Savior Vero Beach Seminary Scholarship Fund

Our Saviours Lutheran Church Mission Developer Scholarship Fund, Lake Oswego, Ore.**

Padley Family Seminary Scholarship Fund

Elsa Schulz Pierce Seminary Scholarship Fund

Rev. Franklin G. Senger III and Mr. Edward J. Wilhelm Seminary Scholarship Endowment Fund

Earl Melvin Sletten Fund for Leaders Scholarship Endowment

Rev. Arne Strandjord Memorial Endowment Fund

Rev. Jeanette Bialas Strandjord Seminary Scholarship Endowment Fund

Elaine P. Tucker Seminary Scholarship Fund

Rev. Joseph and Claudia Wagner Seminary Scholarship Fund

Rev. Dr. Frederick, Anna, and Kathleen Wedemeyer Seminary Scholarship

Chaplain Eric and Mrs. Paula Wester Chaplaincy Scholarship Fund***

OTHER ENDOWMENTS | **SUPPORTING FUND FOR LEADERS**

Curtiss A. and Elaine V. Anderson Memorial Endowment Fund*

Thomas J. Anders and Gerald E. Lloyd Memorial Chaplaincy Scholarship***

Calvary Lutheran Church Fund for Leaders Endowment Fund

Carmen Chavez Memorial Endowment Fund

Ottilya Elliott Memorial Endowment Fund*

Elmstrom Family Federal Chaplaincy Scholarship Fund***

Fund for Leaders Alumni Scholarship Fund

Rev. Ronald T. and Sue Ann Glusenkamp Seminary Scholarship

Inspire Faith Seminary Scholarship Fund

Leroy R. Keranen Endowment Fund*

William Larsen Memorial Scholarship Endowment

Rev. Mark and Kari Olsen Seminary Scholarship Fund

St. Michael Lutheran Church Virginia Beach Chaplaincy Scholarship Fund***

Louise Stroud Sullivan Federal Chaplaincy Seminary Scholarship***

Rev. Dr. Gerald S. Troutman Seminary Scholarship Endowment Fund

Zoar Lutheran Church Seminary Scholarship Fund

IN MEMORIAM

With thanksgiving to God, we remember the faithful and generous supporters of the Fund for Leaders whose deaths we have learned of in the past year. The gifts they gave and/or named endowment funds they established provide a legacy that will make a difference in the lives of ELCA seminary students and the congregations and ministries they serve for years to come. Those whose names are known to us are listed below with thanks for their faithful witness to the gospel.

Mrs. Beverly W. Amling

The Rev. Lowell L. Anderson

Mrs. Sharon G. Anderson

Dr. Waino E. Aukee

The Rev. David E. Baker

Mr. Luther Berntson

Mr. Frank E. Beutler

Mr. Henry and Mrs. Carolyn Broesche

Mr. Alan F. Buckel

Mr. William J. Buttaggi

The Rev. Larry R. Camberg

Mrs. Bernice E. Campbell

Mrs. H. Eloise Dale

The Rev. Daniel W. Erlander

Ms. Dorothy A. Everson

Mr. David A. Feemster

The Rev. Marlene Helgemo

Mr. Robert V. Helgeson

The Rev. Eimo Hinrichs

Ms. Dorothy E. Hull

Mrs. Dorothy Jensen

Ms. Alice Jolivette

Mrs. Judy K. Larsen

The Rev. Philip A. Lynch

Mrs. Ann M. Maland

Mrs. E. Martha McCune

Mr. Rudolph A. Nef

Mr. Donald W. Nord

Mr. Galen W. Olson

The Rev. James F. Peters

The Rev. Jon R. Petersen

Ms. Lois M. Rand

Ms. Lynne S. Redelsheimer

Deacon Paula O. Rennegarbe

The Rev. Dennis L. Schatt

Mr. James F. Scherer

Mrs. Ludmila Seale

Mr. Stephen C. Sheie

The Rev. James L. Shiell

The Rev. Lawrence A. Shoberg

Mr. Paul M. Sletten

Mr. Wilbert "Bill" Thiel

Dr. Richard "Rick" L. Torgerson

The Rev. Duane E. Ulleland

Ms. Evelyn M. Van Raden

Ms. Helen A. Vigness

Mrs. Shirley L. Wetmore-Waller

Ms. Janet A. Yeich

THANK YOU

FFL ALUMS OFFER WORDS OF GRATITUDE FOR



“Receiving a Fund for Leaders scholarship meant that I knew the entire church was supporting me as I followed God’s call to ministry. I had your prayers, your financial support and your encouragement on the journey. Thank you!”

—Karen Sease, 2010 Fund for Leaders Full-tuition Scholarship recipient

“Simply, THANK YOU! There is a beauty to the unburdening that has been gifted to me through the FFL program, enabling me to attempt to discern and follow the will of the Holy Spirit in my ministry without the additional noise of crippling debt.”

—W. Roger Randolph III, 2019 Federal Chaplaincy Scholarship recipient



“I coincidentally met the son of the donor that made my scholarship possible while in seminary — it was definitely a Holy Spirit moment. He was kind enough to send photos and information about his father’s life. His father cared deeply about equipping pastors not only as theologians but as leaders. This sparked in me a deep sense of responsibility to make sure I stewarded his investment by seeking out opportunities to grow as a leader. I am deeply grateful for his choice to invest in the church.”

—Dominique McFall, 2012 Full-tuition Scholarship recipient



SUPPORTERS OF THE FUND FOR LEADERS



“When I think of folks who have generously shared to make these scholarships possible, I think of Paul’s words from Philippians: ‘I thank my God for every remembrance of you, always in every one of my prayers for all of you, praying with joy for your partnership in the gospel from the first day until now.’ Thank you for your partnership for the sake of the gospel.”

—Jeremiah Smith, 2016 Mission Developer scholarship recipient

“I truly cannot say thank you enough. You changed my life, you made seminary possible for me, and you’ve helped me grow into my calling as a pastor. Knowing there are people, whom I may never meet, supporting me and other future people in ministry means the world to me. I thank God for you, your generosity and your support of leaders in ministry.”

—Courtney Smith Westerlund, 2018 Full-tuition Scholarship recipient



“YOUR DONATIONS MATTER. Higher education is becoming harder and harder to achieve because of the financial cost, and thus pastors are becoming harder and harder to produce. An education in an environment more free of the stress of financial burden can make or break that education. I was so blessed to be able to go to seminary and be totally focused on my studies and not have to worry about a financial burden, because FFL was there for me. THANK YOU.”

—Isaac Taylor, 2019 Federal Chaplaincy Scholarship recipient



NUMBERS FOR THE 2023-2024 ACADEMIC YEAR*

FFL Churchwide Scholarships	132	
Full-tuition	108	
Mission Developer	23	
Federal Chaplaincy	1	
Total amount to be distributed:		\$2,193,287
Synod and Congregational Partner Scholarships	204	
Total amount to be distributed:		\$701,391
TEEM Scholarships	77	
Total amount to be distributed:		\$292,600
Total number of scholarships awarded	413	
Students supported in 2023-2024	345	
Total amount to be awarded in 2023-2024:		\$3,187,278

**As of August 14, 2023*

RISING TO FUTURE CHALLENGES

We've come a long way since the ELCA Fund for Leaders was established over 25 years ago, but we still have a way to go.

Reaching \$100 million in endowment funds would permit us to award \$4 million in scholarships every year, supporting nearly 50 new students!

In just the last five years our distribution of funds has grown from \$2 million to \$3 million. With your help we can grow that figure by another million dollars. To fully realize this vision of the Fund for Leaders, we need you! Your investment will ensure that the gospel will be faithfully preached for generations to come.

Together we can support all those God is calling to lead our church into the future.

GREAT GIFTS

Say "yes" to the future leaders of this church by making a gift and/or multiyear commitment today. Your gifts fund an endowment to provide annual tuition assistance into perpetuity.



\$475,000

Endow a full-tuition scholarship, allowing distribution of \$19,000 to one student per academic year.



\$237,500

Contribute half of a full-tuition scholarship, allowing distribution of \$9,500 to one student per academic year.



\$25,000

Establish a named endowment within the ELCA Fund for Leaders.

A NOTE FROM THE REV. BENJAMIN A. HOGUE

Dear friends,

What a joy it is to share greetings and gratitude with you as the new director of giving for ELCA Christian Community and Leadership, the “home area” where Fund for Leaders now resides. I step into this role with humility and a deep sense of responsibility, aware of the tremendous impact your generosity has had on empowering future leaders within the ELCA.

My journey with ELCA Fund for Leaders is a deeply personal one, because a decade ago I was a Full-tuition Scholarship recipient. I know firsthand the impact your gifts have on the lives of seminarians. I journeyed through seminary supported by not only the many people and communities that have shaped me throughout my life but also by you, advocates for the future leaders of our church.

ELCA Fund for Leaders has always set the bar high and shone a beacon of hope, providing vital financial support to individuals pursuing a vocation in ministry. Your commitment to the mission and ministry of the fund has enabled many of us to receive the education, training and resources we needed to serve our communities and congregations effectively.

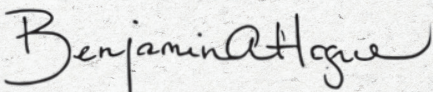
As we move forward together, I would like to express my heartfelt appreciation for the exceptional work of my predecessors and the incredible dedication of you, our donors. Your financial contributions have transformed dreams into reality, nurtured the growth of vibrant congregations and spread far and wide the message of God’s love and grace. Thank you!

I look forward to hearing why this ministry means so much to you and how your investment in the fund has shaped your faith and life. Thank you for your commitment to the mission of the ELCA through your support of ELCA Fund for Leaders. Together we will continue to nurture and empower the faithful leaders who will guide our church and world toward an even more beautiful tomorrow. Your generosity is a testament to the boundless love and grace that define our rich Lutheran identity.

If you have any questions or ideas or would like to discuss your involvement further, feel free to reach out to me. I am excited to get to know you as we work together to achieve our shared vision.

Blessings to you, dear friends, and may God continue to bless our entire Fund for Leaders family: students, supporters, staff and church.

In faith and service,



The Rev. Benjamin A. Hogue
Director of Giving, Christian Community and Leadership
Benjamin.Hogue@elca.org

MINISTRY JOURNEYS

Fund for Leaders scholarship recipients are already at work in ministries across the ELCA. They serve as worship leaders, youth ministers, food pantry volunteers, policy advocates and more.





The ELCA Fund for Leaders scholarship program supports students of tremendous promise attending ELCA seminaries. By making seminary more affordable, the ELCA Fund for Leaders enables more future ministers to go to seminary and helps them graduate with less debt, empowering those whom God calls into rostered leadership to serve the church wherever they are needed most.

We are a thriving church, and each of us has a unique role to play in helping the mission and ministry of this church. Through your gifts to the ELCA Fund for Leaders, you not only support students now but also invest in our church's future.

To make a gift or to learn more about naming the ELCA Fund for Leaders as a charitable beneficiary in your estate plan, please contact us today.

ELCA Fund for Leaders

[ELCA.org/fundforleaders](https://elca.org/fundforleaders)

Rev. Marissa Krey, Director

773-380-2731

Marissa.Krey@elca.org

Rev. Benjamin Hogue, Mission Funding Director

773-380-2785

Benjamin.Hogue@elca.org



ELCA
Fund for Leaders