



1997 **25th** 2022
Anniversary

ELCA FUND FOR LEADERS

for this church and for our future
2022-2023



ELCA
Fund for Leaders

ELCA FUND FOR LEADERS

TABLE OF CONTENTS

A Note From the Rev. Marissa Krey, Director, ELCA Fund for Leaders	4
Full-tuition Scholarship Recipients	5
Fund for Leaders Directors' Perspectives	14
Mission Developer Scholarship Recipients	16
Federal Chaplaincy Scholarship Recipients	20
Synod Fund for Leaders Scholarship Recipients	21
Congregation Fund for Leaders Scholarship Recipients	25
Theological Education for Emerging Ministries (TEEM) Fund for Leaders Scholarship Recipients	26
Gratitude for and Acknowledgment of New Donors and Partners	28
In Memoriam	32
Numbers for the 2022-2023 Academic Year	33
A Note From the Rev. Mark Bernthal, Fund for Leaders Leadership Table	34
Fund for Leaders Founding Leaders	35

A NOTE FROM THE REV. MARISSA KREY, DIRECTOR, ELCA FUND FOR LEADERS

“Therefore, since we are surrounded by so great a cloud of witnesses, let us also lay aside every weight and the sin that clings so closely, and let us run with perseverance the race that is set before us, looking to Jesus the pioneer and perfecter of our faith.”—Hebrews 12:1-2

Dear friends,

As I think about all that the ELCA Fund for Leaders has accomplished in 25 years, these verses from the book of Hebrews continue to be at the forefront of my mind. Each and every seminarian has their own cloud of witnesses — the people who have shaped their faith and nurtured their call to ministry. **That cloud of witnesses expands even more when our students are matched with their named scholarships.**

Time and again, students tell us how meaningful it is to know the faith stories of those who made their education possible. Reading about the faithful generosity of the saints who came before them is inspiring. Many of those saints are honored in these pages, but some are known only to God. Nearly every week I come across a new witness in the life of the Fund for Leaders story. To steward their gifts and pass on their stories to the future leaders of our church is holy work.

Through the contributions of these witnesses, large and small, we have accomplished more than most people ever imagined when the idea of the Fund for Leaders became a reality 25 years ago. **Together we have touched the lives of nearly 1,200 pastors and deacons, a remarkable achievement!** While the goal of supporting every candidate remains before us, we continue to push with perseverance toward the goal — knowing that success is possible because we have already come so far.

In our 25th anniversary year, the ELCA Fund for Leaders is supporting 375 students — more than ever before — with over \$3.4 million! This record number represents Fund for Leaders’ commitment to expanding eligibility to new groups of students. For the first time, Fund for Leaders is supporting students in the TEEM (Theological Education for Emerging Ministries) program. In partnership with both synods and seminaries, **this expansion has allowed us to reach 80 new students!** As the path to rostered leadership evolves, Fund for Leaders is committed to providing aid to this diverse group of leaders.

Freeing our future pastors and deacons from the burden of student debt remains one of the most important tasks before us as a church. To those who have gotten us this far, thank you. In the years to come, I look forward to expanding our cloud.

Yours in Christ,



A handwritten signature in black ink that reads "Marissa H. Krey". The signature is written in a cursive, flowing style.

Rev. Marissa H. Krey
Director, ELCA Fund for Leaders

2022-2023 FUND FOR LEADERS FULL-TUITION SCHOLARSHIP RECIPIENTS

We celebrate with this year's group of called and gifted future leaders. This year, 36 new scholarships totaling \$684,000 are supported by Fund for Leaders general and named endowment funds valued at \$49,428,261 on June 30, 2022.

REGINA BANKS

Scholarship made possible by the Rev. Earlean Miller Seminary Scholarship Fund

Synod: Southwest California

Attending: Pacific Lutheran Theological Seminary

Mentor: The Rev. Tuhina Rasche, Senior Research Associate, Aspen Institute Religion & Society Program

A guiding Bible verse: Psalm 37:4

Inspiring biblical figure: *The prophet Nathan's honesty, boldness and fearlessness in proximity to the power of absolute monarch King David is the type of witness I aspire to.*



CHRISTOPHER BEAVER

Scholarship made possible by the Rev. Victor L. Brandt Seminary Scholarship Fund

Synod: South-Central Synod of Wisconsin

Attending: Luther Seminary

Mentor: The Rev. John Worzala Dumke, Pastor, Luther Memorial Church, Madison, Wis.

A guiding Bible verse: 1 John 4:16

Inspiring biblical figure: *As the first disciple to see Jesus after his resurrection and the first messenger of the good news in the world, Mary Magdalene was an inspirational and altogether vital biblical figure. Jesus made of his friend and student, Mary, an apostle to share the gospel with God's people on the first Easter Sunday and to give us hope for the world to come.*



NICHOLAS BREINING

Scholarship made possible by the Omer G. and Annabelle K. Voss Family Donor Advised Fund

Synod: South Dakota

Attending: Lutheran School of Theology at Chicago

Mentor: The Rev. Karen Ressel, Pastor, Eleva Lutheran Church, Eleva, Wis.

A guiding Bible verse: Mark 12:28-34

Inspiring biblical figure: *Peter has been a relatable biblical figure for me over the last few years, especially during this season of discernment toward seminary and rostered ministry.*



LINDA DAVIES

Scholarship made possible by the Lord of Life Lutheran Church Seminary Scholarship Fund, Glenn Heights, Texas

Synod: Texas-Louisiana Gulf Coast

Attending: Luther Seminary

Mentor: The Rev. David Bauser, Pastor, Lord of Life Lutheran Church, The Woodlands, Texas

A guiding Bible verse: 1 Corinthians 12:4-26

Inspiring biblical figure: *Paul inspires me to challenge the status quo or "This is the way we've always done things" in order to find our new creation in Christ, as well as to use my gifts to work and lead others toward being the one body of Christ, doing God's work together.*



EMILY DEMARCO

Scholarship made possible by the Mr. and Mrs. Peter, William and Esther Herlein Fund

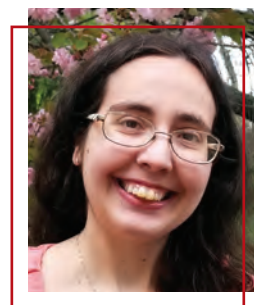
Synod: Metropolitan Washington, D.C.

Attending: Pacific Lutheran Theological Seminary

Mentor: The Rev. Angela Shannon, Pastor, All Saints Lutheran Church, Bowie, Md.

A guiding Bible verse: Isaiah 43:19

Inspiring biblical figure: *I am inspired by Stephen because of his dedication to serving those at the margins and his deep faith that allowed him to proclaim God's word even in the face of the fiercest opposition.*



KATIE EVANS

Scholarship made possible by the E. Marilyn Oberle Seminary Scholarship Endowment Fund

Synod: Metropolitan Washington, D.C.

Attending: Pacific Lutheran Theological Seminary

Mentor: The Rev. Ray Ranker, Pastor, Lutheran Campus Ministry, University of Maryland, College Park, Md.; the Rev. Julie Bringman, Pastor, Hope Lutheran Church and Student Center, College Park, Md.

A guiding Bible verse: Romans 8:31-39

Inspiring biblical figure: *Mary Magdalene is a biblical figure who inspires me. In her pain, grief and trauma, she is the first person Jesus appears to. She is not perfect, but she is there, ready to spread the good news as Jesus asks her to.*



EMILY FLECKENSTEIN

Scholarship made possible by the Erckmann-Miller Seminary Scholarship Fund

Synod: Western Iowa

Attending: Luther Seminary

Mentor: Dr. David O'Hara, Associate Professor, Augustana University, Sioux Falls, S.D.

A guiding Bible verse: Matthew 25:31-40

Inspiring biblical figure: *One of the biblical figures I look up to the most is the widow of Zarephath, because, though she comes from lowly roots, she is chosen by God and the key to Elijah's ministry.*



SARAH FREYERMUTH

Scholarship made possible by the Rev. Kenneth R. Ahlstrand Seminary Scholarship Endowment Fund

Synod: Central States

Attending: Lutheran School of Theology at Chicago

Mentor: The Rev. Katie Fick, College Pastor, St. Olaf College, Northfield, Minn.; the Rev. Paul Moessner, Pastor (retired), St. John's Lutheran Church, Bennington, Neb.

A guiding Bible verse: Micah 6:8

Inspiring biblical figure: *I've always been inspired by Ruth's open-mindedness, dedication and kindness in the face of the unknown.*



RACHAEL HOISTAD

Scholarship made possible by the Rev. Olaf A. Berge Memorial Endowment Fund

Synod: Eastern North Dakota

Attending: Luther Seminary

Mentor: The Rev. Julie Johnson, Pastor, TNT Parish, Forman, Rutland and Havana, N.D.

A guiding Bible verse: Matthew 5:14-16

Inspiring biblical figure: *I often find myself caught up in the busyness of life. Martha inspires me to instead trust God and focus on what is really important: spending time with my savior.*



ELIZABETH HURT

Scholarship made possible by the Jutta F. Anderson Seminary Scholarship Fund

Synod: Northeastern Iowa

Attending: Wartburg Theological Seminary

Mentor: The Rev. Laurel Meester, Pastor, First Lutheran Church, Dows, Iowa

A guiding Bible verse: Luke 11:9-10

Inspiring biblical figure: *Paul inspires me to live my life centered in Christ, to challenge the status quo and to use my words thoughtfully to motivate and help others realize the transformative power of Jesus Christ.*



KATHERINE INSALACO

Scholarship made possible by the Portico Benefit Services Seminary Scholarship Endowment Fund

Synod: Oregon

Attending: Pacific Lutheran Theological Seminary

Mentor: The Rev. Patti Welch, Pastor, St. Luke Lutheran Church, Portland, Ore.

A guiding Bible verse: Romans 1:12

Inspiring biblical figure: *I can certainly relate to the human nature of Thomas' skepticism and then his awe when Jesus shows up and blows his mind.*



MARGARET JACKSON

Scholarship made possible by the Rev. Dr. Duane Larson and Dr. Joen Larson Seminary Scholarship

Synod: Southwestern Texas

Attending: Wartburg Theological Seminary

Mentor: The Rev. Sharon Wiggins (retired), Southwestern Texas Synod

A guiding Bible verse: Galatians 3:28

Inspiring biblical figure: *The nameless Samaritan woman in John, Chapter 4, inspires me the most. She is a poor, tired woman, beaten down by life, but when she breaks the rules and speaks to Jesus, her life is changed. She is changed, and she serves as a portrait of what faith can do in a person's life.*



MARIT JOHNSON

Scholarship made possible by the Bethel Lutheran Church Endowment Fund, Chicago, Ill.

Synod: Metropolitan Chicago

Attending: Trinity Lutheran Seminary

Mentor: The Rev. Jolene Knudson-Hanse, Pastor, Our Savior's Lutheran Church, Spring Valley, Minn.

A guiding Bible verse: Romans 8:38-39

Inspiring biblical figure: *The parable of the persistent widow (Luke 18:1-8) inspires me because she is a biblical example of "Nevertheless, she persisted." She reminds me that our faith requires persistence in our hope of God's love and justice for all God's people.*



JACINDA JONES

Scholarship made possible by the Carl E. and Alice E. Schaedel Memorial Endowment Fund

Synod: Northwestern Ohio

Attending: Wartburg Theological Seminary

Mentor: The Rev. Rick Jensen, Pastor, Trinity Lutheran, Arcadia, Ohio

A guiding Bible verse: Jeremiah 29:11

Inspiring biblical figure: *Ruth is strong and loyal, which makes her someone I respect and use as a guiding spirit.*



CHERYL LANTZ

Scholarship made possible by the Astrid V. Wilson Memorial Endowment Fund

Synod: Western North Dakota

Attending: Luther Seminary

Mentor: The Rev. Lisa Lewton, Pastor, St. John Lutheran Church, Dickinson, N.D.

A guiding Bible verse: John 10:10

Inspiring biblical figure: *I admire Moses tremendously because he was unsure if he could do what God called him to do; with faith he listened to God and followed the call to lead the Israelites.*



ZACHARY LINDLER

Scholarship made possible by the Gerald and Marihope Troutman Scholarship Fund

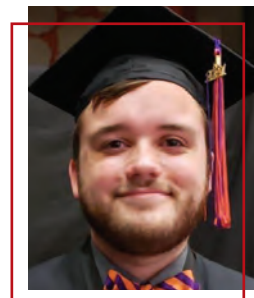
Synod: South Carolina

Attending: Lutheran Theological Southern Seminary

Mentor: The Rev. Josh Kestner, Campus Pastor, University Lutheran Church, Clemson, S.C.

A guiding Bible verse: Ephesians 4:14-16, Matthew 7:12, 1 Samuel 3:10b

Inspiring biblical figure: *Moses: he was not prepared at all for the years of leadership and service, and spent most of his time asking God for guidance and help.*



BRENDA LUSSIER

Scholarship made possible by the Rev. Dr. Phyllis Anderson Seminary Scholarship Endowment Fund

Synod: Pacifica

Attending: Pacific Lutheran Theological Seminary

Mentor: The Rev. Kent Tuohino, Pastor, Trinity Lutheran Church, Riverside, Calif.

A guiding Bible verse: Psalm 59:16

Inspiring biblical figure: *Peter is the figure I relate to. He showed his weaknesses, he bounced back quickly and he believed in Jesus as the Messiah. When he committed himself to God, he changed our world and assisted others in growing their faith.*



JARED McLEY

Scholarship made possible by the George and Martha Benson Memorial Endowment Fund

Synod: Northeastern Iowa

Attending: Wartburg Theological Seminary

Mentor: The Rev. Mark Anderson, Pastor, St. Paul's Church & School, Waverly, Iowa

A guiding Bible verse: Matthew 19:14

Inspiring biblical figure: *I think that the disciple Peter is the most relatable, because even in his shortcomings he was loved by Jesus and great works were done through him.*



ELIZABETH MILLER

Scholarship made possible by the Earl Melvin Sletten Fund for Leaders Scholarship Endowment

Synod: North Carolina

Attending: Wartburg Theological Seminary

Mentor: The Rev. Emily Norris, Pastor and Mission Developer, The Dwelling, Winston-Salem, N.C.

A guiding Bible verse: Proverbs 31:8-9

Inspiring biblical figure: *Hosea's relentless pursuit of his bride and his story of repentance, redemption and restoration call me to deep love and acceptance of others (and myself) who are created and chosen children of God, and draws me to mirror to them their worth and identity clearly and fully — and call others to do the same.*



JACQUELINE MILLER

Scholarship made possible by the Paul M. Dauten, Jr. Memorial Endowment Fund

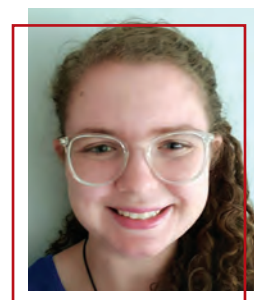
Synod: Greater Milwaukee

Attending: Lutheran School of Theology at Chicago

Mentor: The Rev. Kara Baylor, Campus Pastor, Carthage College, Kenosha, Wis.; the Rev. Tom Smith, Pastor, Trinity Lutheran Church, Kenosha, Wis.

A guiding Bible verse: Isaiah 1:17

Inspiring biblical figure: *Mary Magdalene inspires me because she was the first or among the first to share that Christ was risen before anyone else believed.*



MEGAN MONG

Scholarship made possible by the John E. and Marcia F. Grove Memorial Scholarship Fund

Synod: Central States

Attending: Lutheran School of Theology at Chicago

Mentor: Deacon Mindy Tillberg, Director of Family and Youth Ministry, Immanuel Lutheran Church, Salina, Kan.

A guiding Bible verse: Philippians 2:3-4

Inspiring biblical figure: *I find Deborah the most relatable because of her bold, fiery personality and interactions.*



LYNDSAY MONSEN

Scholarship made possible by the Christ Lutheran Church Endowment Fund, Chicago, Ill.

Synod: Metropolitan Chicago

Attending: Lutheran School of Theology at Chicago

Mentor: The Rev. Adam Russell Taylor, President, Sojourners, Washington, D.C.

A guiding Bible verse: Micah 6:8

Inspiring biblical figure: *I am deeply inspired by Ruth's bravery, courage and loyalty.*



LAURA OLSEN

Scholarship made possible by the Iveda C. and Christen H. Evanson Seminary Scholarship Fund

Synod: Southwestern Washington

Attending: Wartburg Theological Seminary

Mentor: The Rev. Chelsea Globe, Campus Pastor, Lutheran Campus Ministry, University of Washington, Seattle, Wash.

A guiding Bible verse: Ephesians 4:12-13

Inspiring biblical figure: *I relate to Saul-turned-Paul, interrupted and humbled by Jesus — the fulfillment of all righteousness that I had been chasing — and then mostly writing essays, running errands and doing chores for him after that.*



BRANDI PAINTER

Scholarship made possible by the Lahm Family Seminary Scholarship Fund

Synod: Texas-Louisiana Gulf Coast

Attending: Lutheran Theological Southern Seminary

Mentor: The Rev. Richard A. Rhoades, Pastor, First Lutheran Church, Galveston, Texas

A guiding Bible verse: Psalm 46:5

Inspiring biblical figure: *Mary Magdalene is most relatable because she was essentially a hot mess, as Jesus cast out seven demons, but became a loyal follower of Jesus and stood faithfully by his side.*



NICOLE PHILLIPS

Scholarship made possible by the ELCA Fund for Leaders

Synod: South Dakota

Attending: Luther Seminary

Mentor: The Rev. Heidi Youngquist, Pastor, Bethlehem Lutheran, Aberdeen, S.D.

A guiding Bible verse: Psalm 51:13

Inspiring biblical figure: *I can relate to how Moses must have been feeling when he told God all the reasons he wasn't equipped to work for him.*



PATRICK PREACHER

Scholarship made possible by the Rev. Eric Wogen Seminary Scholarship Endowment Fund

Synod: South Carolina

Attending: Wartburg Theological Seminary

Mentor: The Rev. Susan Crowell, Pastor, Trinity Lutheran Church, Greenville, S.C.

A guiding Bible verse: Song of Solomon 2:10-12

Inspiring biblical figure: *I find a great deal of inspiration from the Ethiopian Eunuch in the eighth chapter of Acts as he, studying Scripture for himself after being turned away from temple worship because of his identity as a eunuch, finds good news of Jesus on his way through the wilderness.*



NADIA ROBB-KERN

Scholarship made possible by the Dr. Oliver A. Muhonen Memorial Endowment Fund

Synod: Eastern North Dakota

Attending: Luther Seminary

Mentor: The Rev. Joseph Johnson, Pastor, Our Savior's Lutheran Church, Hillsboro, N.D.

A guiding Bible verse: Micah 6:8

Inspiring biblical figure: *I am most inspired by Ruth for her bold strength in loyalty, faith and compassion for others.*



GRACE ROBINSON

Scholarship made possible by the Van and Linnea Grosse Seminary Scholarship Fund

Synod: North Carolina

Attending: Wartburg Theological Seminary

Mentor: The Rev. Christopher Bowen, Dean of the Chapel, Roanoke College, Salem, Va.

A guiding Bible verse: 1 John 3:16

Inspiring biblical figure: *Philip inspires me; he goes to the edges because God sends him there, he meets people where they are and he shares the good news.*



HEIDI SHILANSKAS

Scholarship made possible by the Albert G. and Svea H. Anderson Memorial Fund

Synod: Northeastern Pennsylvania

Attending: United Lutheran Seminary

Mentor: The Rev. Brandon M. Heavner, Pastor, St. Mark's Evangelical Lutheran Church, Bethlehem, Pa.

A guiding Bible verse: Luke 10:38-42

Inspiring biblical figure: *I love the story of Mary and Martha in Luke's Gospel because in Mary I am given permission to stop in the busyness of life to listen to Jesus and in Martha I am seen as a beloved child of God, longing for community.*



SYDNEY SPRAY

Scholarship made possible by the Rick and Kathy Ambrose Scholarship Endowment Fund

Synod: Northwest Intermountain

Attending: Luther Seminary

Mentor: The Rev. Gretchen Mertes, Pastor, Our Redeemer's Lutheran Church, Seattle, Wash.

A guiding Bible verse: Psalm 27:13

Inspiring biblical figure: *I am always inspired by Esther's willingness to stare death in the face in order to do the right thing.*



MORGAN STEWART

Scholarship made possible by the ELCA Fund for Leaders

Synod: Oregon

Attending: Pacific Lutheran Theological Seminary

Mentor: The Rev. Amanda Zentz-Alo, Pastor, Central Lutheran Church, Portland, Ore.

A guiding Bible verse: Matthew 11:28-30

Inspiring biblical figure: *I find Jonah most relatable because I have also told God "no" many times; it's a reminder that God cares for us even during our most childish tantrums.*



MARA STILLSON

Scholarship made possible by the David D. and Barbara A. Swartling Seminary Scholarship Fund

Synod: South Dakota

Attending: Luther Seminary

Mentor: The Rev. Ann Rosendale, Campus Pastor, Chapel of Reconciliation, Augustana University, Sioux Falls, S.D.

A guiding Bible verse: Luke 3:16

Inspiring biblical figure: *The wildness of John the Baptist is inspiring, and his proclamation of unworthiness as he prepares for the coming of Jesus is a connection that has stuck with me throughout the years.*



ASHLEY TETER

Scholarship made possible by the Mr. and Mrs. Peter, William and Esther Herlein Fund

Synod: Northeastern Pennsylvania

Attending: Luther Seminary

Mentor: The Rev. Jennifer Dee, Pastor, Trinity Lutheran Church, Robesonia, Pa.

A guiding Bible verse: Psalm 118:24, Ephesians 4:32

Inspiring biblical figure: *Ruth inspires me the most with her unwavering love and bravery to follow whatever path God puts her on.*



KRYSTAL WATERS

Scholarship made possible by the Elaine P. Tucker Seminary Scholarship Fund

Synod: Metropolitan Washington, D.C.

Attending: United Lutheran Seminary

Mentor: The Rev. Brett Wilson, Pastor, Georgetown Lutheran Church, Washington, D.C.

A guiding Bible verse: Romans 8:38-39

Inspiring biblical figure: *I am inspired by Martha (as in Mary and Martha). Recently in Bible study, we read the book of John, and I was struck by her devotion and faith after the death of her brother. Her faith in Jesus is inspiring as she answers him in Chapter 11, even in her grief.*



KATHARYN WHEELER

Scholarship made possible by the ELCA Seminary Presidents Fund for Leaders

Synod: Metropolitan Washington, D.C.

Attending: Luther Seminary

Mentor: The Rev. Rich Zawistoski, Pastor (retired), Saint Luke Lutheran Church, Silver Spring, Md.

A guiding Bible verse: Jeremiah 29:11-13

Inspiring biblical figure: *I often find myself relating to Martha, welcoming and serving others and needing the reminder to be present in the moment to actively create relationships with those in the room.*



RACHEL WYFFELS

Scholarship made possible by the ELCA Fund for Leaders

Synod: Minneapolis Area

Attending: Luther Seminary

Mentor: The Rev. Cheryl Mathison, Pastor, St. Philip the Deacon Lutheran Church, Plymouth, Minn.

A guiding Bible verse: John 20:28

Inspiring biblical figure: *Deborah, wise leader of Israel.*



FUND FOR LEADERS DIRECTORS' PERSPECTIVES



“Serving as director of the fund was one of the most forming experiences of my life. Working as church together, we took this bold dream and, with God’s help, launched a life-changing, church-changing program. The lives impacted by the fund radiate throughout the church and the world in ways one can hardly imagine.”

—Cynthia Halverson, 2001-2007

“Minimizing the roadblocks so people can become leaders in the church remains a central passion for me. God is still calling people into leadership — we have to get out of the way!”

—The Rev. Paul N. Hanson, 2007-2010



“Fund for Leaders is about making ministry a viable option for the fantastic future leaders of our church, people who could follow many vocational paths, and letting them know that the whole church stands with them and tangibly supports them in following the call to ordained ministry.”

—Mike Nevergall, 2011-2013



“A highlight for me was spending days reading about the future leaders of the church. There was such a huge breadth and depth of experience and passion that one could not help but feel extremely optimistic about the future of the ELCA.”

—Rachel Wind, 2013-2015

“My whole life of ministry, including our family’s ability to serve as missionaries today, has been made possible by the generosity of this church. I have always been proud to lift up FFL as a way for the whole church to support the courageous people called by God to ministry, making it possible for so many to say ‘yes!’ to this call.”

—The Rev. Gabi Aelabouni, 2016-2019



“It was an honor and a privilege to serve at the intersection between the generous supporters of Fund for Leaders and the many called and gifted seminary students FFL supports. On this ‘holy ground,’ God is revealed to be at work in and through the generosity and faithfulness of donors, on the one hand, and through the giftedness and faithfulness of future ministers, on the other.”

—The Rev. Mark Olsen, 2019-2021



2022-2023 FUND FOR LEADERS

MISSION DEVELOPER SCHOLARSHIP RECIPIENTS

This year, 13 new scholarships totaling \$152,000 are being supported by Fund for Leaders Mission Developer named endowment funds valued at \$3,126,364 on June 30, 2022.

EDWIN APARICIO ORTEZ

Scholarship made possible by the Bjorg Davidson Johannesson Mission Developer Scholarship Fund

Synod: Greater Milwaukee

Attending: Wartburg Theological Seminary

Mentor: The Rev. Anthony Acompañado, Pastor, Ascension Lutheran Church, Waukesha, Wis.

A guiding Bible verse: Exodus 4:10-17

Inspiring biblical figure: *The humility and honesty of Moses upon receiving the call.*



BENJAMIN BERNSTEIN

Scholarship made possible by the Rev. Stanley E. Olson Mission Developer Seminary Scholarship Fund

Synod: South Carolina

Attending: Lutheran Theological Southern Seminary

Mentor: The Rev. Michael T. Shackelford, Chaplain and Bereavement Coordinator, Affinity Hospice, Greenville, S.C.

A guiding Bible verse: Jeremiah 1:4-8

Inspiring biblical figure: *I am inspired by the prophet Jeremiah because of his perseverance and faithfulness to God.*



ANGELA CHACÓN

Scholarship made possible by the Lois and Gerald Olsen Mission Developer/Redeveloper Scholarship Fund

Synod: Rocky Mountain

Attending: Wartburg Theological Seminary

Mentor: The Rev. Dr. David Cox, Pastor, Valley Lutheran Church, Los Lunas, N.M.

A guiding Bible verse: Ecclesiastes 3:1-8

Inspiring biblical figure: *The biblical character I relate to is one of mystery — it is the naked man in the Gospel of Mark. Reflecting on my revealed, naked self, God invites me, along with all of humanity, to look through the lens of God's love for all of God's creation, and, drawing on Henri Nouwen's teaching, we claim the truth: "We are not what we do. We are not what we have. We are not what others think of us. Coming home is claiming the truth. I am a beloved child of God."*



CANDICE CLARK

Scholarship made possible by the George and Frances Cornell Family Mission Developer Seminary Scholarship Fund

Synod: Southeastern

Attending: Lutheran Theological Southern Seminary

Mentor: The Rev. Chris Hermansen, Pastor, Epiphany Lutheran Church, Suwanee, Ga.

A guiding Bible verse: Romans 8:28-30

Inspiring biblical figure: *I most relate to Joseph, a dreamer and very optimistic, continuously watching God trade beauty for ashes.*



PERLA FLORES RUIZ

Scholarship made possible by the Delilah E. Ross Memorial Endowment Fund

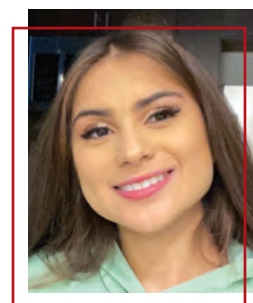
Synod: Pacifica

Attending: Pacific Lutheran Theological Seminary

Mentor: The Rev. Maria Santa Cruz, Pastor, Our Savior's Lutheran Church, San Diego, Calif.; the Rev. Dr. Ruben Duran, Senior Adviser, New Ministry Development, ELCA churchwide organization

A guiding Bible verse: Psalm 46, 1 Corinthians 16:14

Inspiring biblical figure: *Sarah's story is very heartwarming for me because God has always managed to make what seems impossible, possible — which can only be done through God. I have received so many blessings when life got very hard for me, and God never fails to make a way.*



MORRIS GOFF

Scholarship made possible by the Rev. P. Richard and Nancy L. Grove Mission Developer Scholarship Fund

Synod: Delaware-Maryland

Attending: United Lutheran Seminary

Mentor: Bishop Brenda Bos, Southwest California Synod

A guiding Bible verse: Micah 6:8

Inspiring biblical figure: *Peter is most relatable because, while he is rash and very flawed, as we all can be, his faith and humanity is the rock upon which Christ built his church.*



SHAREI GREEN

Scholarship made possible by the Elizabeth K. Weisburger Mission Developer Seminary Scholarship Fund

Synod: Metropolitan Chicago

Attending: Lutheran School of Theology at Chicago

Mentor: The Rev. Dr. Andrea L. Walker, Pastor, St. Paul's Lutheran Church, Washington, D.C.

A guiding Bible verse: Esther 4:14

Inspiring biblical figure: *I identify with Esther as she is a woman who was in an incredibly vulnerable position — though one of perceived power — who spoke truth to power on behalf of her community.*



SARAH LEAKE

Scholarship made possible by the Rev. Dr. Lauritz and Mrs. Margaret Vigness Mission Developer Scholarship Fund

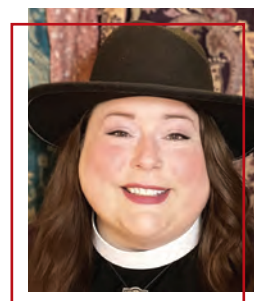
Synod: Southern Ohio

Attending: Trinity Lutheran Seminary

Mentor: The Rev. Cheryl Peterson, Academic Dean, Trinity Lutheran Seminary, Columbus, Ohio

A guiding Bible verse: 2 Corinthians 5:20-21

Inspiring biblical figure: *The woman at the well — she banters with Jesus and then goes back to her people to tell everyone about him.*



AILEN MUSHI

Scholarship made possible by the Rev. Dr. Lauritz and Mrs. Margaret Vigness Mission Developer Scholarship Fund

Synod: Metropolitan Washington, D.C.

Attending: Pacific Lutheran Theological Seminary

Mentor: The Rev. Darcy A. Tillman, Pastor, Lutheran Church of the Covenant, Dale City, Va.

A guiding Bible verse: Judges 6:15

Inspiring biblical figure: *I find King David inspiring; he was walking in repentance and restoration.*



JACQUELINE RYAN

Scholarship made possible by the Our Savior's Lutheran Church Mission Developer Scholarship Fund - Lake Oswego, Ore.

Synod: Oregon

Attending: Luther Seminary

Mentor: The Rev. Chris Kramer, Pastor, Nativity Lutheran Church, Bend, Ore.

A guiding Bible verse: Romans 12:2

Inspiring biblical figure: *Esther and the story behind the Book of Esther inspire me to consider that perhaps I, too, have been made for a moment such as this, trusting that God's purpose is at work behind the scenes.*



SAWYER VANDEN HEUVEL

Scholarship made possible by the Helen S. and Earl Randolph Hessler, Jr. Family Mission Developer Scholarship Fund

Synod: South Dakota

Attending: Luther Seminary

Mentor: The Rev. Ann E. Rosendale, Campus Pastor, Augustana University, Sioux Falls, S.D.

A guiding Bible verse: Isaiah 6:8

Inspiring biblical figure: *Joseph (son of Jacob) because he was a fabulous dreamer, believer and seeker.*



PAUL WILLEY

Scholarship made possible by the MIF Mission Developers Seminary Scholarship Fund

Synod: Metropolitan Chicago

Attending: Lutheran School of Theology at Chicago

Mentor: The Rev. Julane Nease, Pastor, United Lutheran Church, Rockford, Ill.

A guiding Bible verse: Isaiah 41:9-10

Inspiring biblical figure: *Joseph, son of Jacob, because no matter the difficulty that he faced, he remained faithful to God and ultimately to his family as well.*



CHARBEL ZGHEIB

Scholarship made possible by the Sara E. and John R. Wise Mission Developers Seminary Scholarship Fund

Synod: Sierra Pacific

Attending: Pacific Lutheran Theological Seminary

Mentor: The Rev. Khader Khalilia, Director, Arab and Middle Eastern Ministries, ELCA churchwide organization

A guiding Bible verse: Matthew 25:40

Inspiring biblical figure: *Joseph: The silence of Saint Joseph. His silence, which is not what we imagine, drowns him in contemplation of the mystery of God, with complete obedience to the divine will. This silence does not come from an inner emptiness but rather is the result of a deep faith that fills his heart, directing every breath of his thoughts and every action toward God.*



2022-2023 FUND FOR LEADERS

ELCA FEDERAL CHAPLAINCY SCHOLARSHIP RECIPIENTS

This year, three scholarships totaling \$39,000 are being supported by Fund for Leaders Federal Chaplaincy Ministry named endowment funds valued at \$996,879 on June 30, 2022.

REBEKAH NELSON

Scholarship made possible by the ELCA Federal Chaplaincy Scholarship Fund

Synod: Southwest California

Attending: Wartburg Theological Seminary

Mentor: The Rev. Jeffrey A. Nelson, Pastor, St. Andrew Lutheran Church, Whittier, Calif.

A guiding Bible verse: Ruth 1:16

Inspiring biblical figure: *Peter, because Jesus chose perfectly imperfect people to build the church on.*



ALEXANDER O'CONNELL

Scholarship made possible by the Colonel Robert A. Williamson, M.D. Scholarship

Synod: Eastern North Dakota

Attending: Luther Seminary

Mentor: The Rev. David L. Johnson, State Chaplain, North Dakota National Guard

A guiding Bible verse: Matthew 5:3

Inspiring biblical figure: *The biblical figure of Jacob, as he gets dragged into all kinds of mischief in his life but still has the heart to seek reconciliation for all he's done or failed to do.*



WILMUS ROGER RANDOLPH III

Scholarship made possible by the Rev. Murray D. and Rhoda M. Finck Federal Chaplaincy Seminary Scholarship Fund

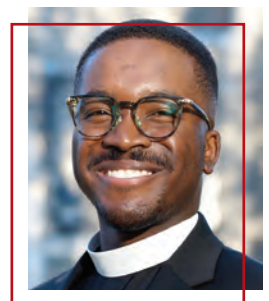
Synod: Southwestern Pennsylvania

Attending: United Lutheran Seminary

Mentor: The Rev. Kelsey Brown, Pastor, Jehu's Table, Brooklyn, N.Y.

A guiding Bible verse: Psalm 138:8

Inspiring biblical figure: *Peter, for all the times I thought I "had things figured out" yet couldn't be further from true reality.*



2022-2023 SYNOD

FUND FOR LEADERS SCHOLARSHIP RECIPIENTS

This year, 205 scholarships totaling \$714,233 are being supported by the Fund for Leaders synod endowment funds valued at \$17,503,887 on June 30, 2022.

REGION 1

Northwest Washington Synod Fund for Leaders (1B)

Luther Seminary

Katrina Bentsen David Horton
Lori Cavender Jory Mickelson
Bobbi Cyr Callie Moothart
Angela Czarnik-Neimeyer

Pacific Lutheran Theological Seminary

Sharon DeGraw Matthew Wilkerson
Joseph Lual

Northwest Intermountain Synod Fund for Leaders (1D)

Luther Seminary

Wendy Kenney Zachary Wonderly
Lori Tharp

Pacific Lutheran Theological Seminary

Robert Andrew Hamblen Amy Sperline

Oregon Synod Fund for Leaders (Allert) (1E)

Pacific Lutheran Theological Seminary

Elizabeth Hofrichter Andrew Ross

Montana Synod Fund for Leaders (1F)

Luther Seminary

Kristin La Ve' Carlos Ramalho
Colter McCarty

Wartburg Theological Seminary

Riley Anderson-Reed Shawn Juers
Joshua Gomez Baird Linke

REGION 2

Pacifica Synod Fund for Leaders (2C)

Luther Seminary

Rachel Reeder

Pacific Lutheran Theological Seminary

Keegan Cheleden Jenifer Overly-Brown
Elena Enriquez Daneen Pysz
Michelle Kuan-Yang Alicia Saenz
Brenda Lussier Josefina Villalpando Paredes

Wartburg Theological Seminary

Jennifer Barker

Grand Canyon Synod Fund for Leaders (2D)

Lutheran School of Theology at Chicago

Gail Kenny

United Lutheran Seminary

Kylee Bestenlehner Wyatt Linde

Pacific Lutheran Theological Seminary

Judith Wold

The Santa Cruz Sunrise Multi-Cultural Fund for Leaders Endowment Fund (2D)

Lutheran Theological Southern Seminary

Louis Liss

REGION 3

Western North Dakota Synod Fund for Leaders (3A)

Wartburg Theological Seminary

Adam Barden

South Dakota Synod Fund for Leaders (Anderson, Harrington, Ketterling, Wall) (3C)

Luther Seminary

Hans Lundquist Mara Stillson
Tami Steffensen

South Dakota Synod Women of the ELCA Fund for Leaders (3C)

Luther Seminary

Nicole Phillips

Northwestern Minnesota Synod Fund for Leaders (3D)

Luther Seminary

Benjamin Dyrhaug Elizabeth Monke
Madeline Elliott Anna Monke-Gervais
Marilyn Grafstrom Jessica Paulsen

Wartburg Theological Seminary

Kyle Conant Katelyn Ohren
Christopher Friese Curtiss Peterson
Amy Kelly

**Southwestern Minnesota Synod Fund for Leaders
(Trinity, Marble) (3F)**

Luther Seminary

Diana Brown Hannah Sackett
Gavin Diehm

Wartburg Theological Seminary

Myron Crawford Sara Larson

**Southwestern Minnesota Synod Fund for Leaders
(Green Lake) (3F)**

Luther Seminary

Gavin Diehm

Wartburg Theological Seminary

Robert Ossefoort

Minneapolis Area Synod Fund for Leaders (3G)

Luther Seminary

Adam Boldenow Susan Potratz
Brent Ellerbee Stacey Rudolph
Sumner Musolf Alazar Tamiru Lemu
Erik Nelson Alexander Theship-Rosales
Breanna Peterson

Wartburg Theological Seminary

Yesenia Morales Bahena

Saint Paul Area Synod Fund for Leaders (3H)

Luther Seminary

Jennifer Norberg Esther Sianipar

Wartburg Theological Seminary

Brittany Barkus

Southeastern Minnesota Synod Fund for Leaders (3I)

Luther Seminary

David Chatelaine Krysta Flaharty

Wartburg Theological Seminary

Yang Tut

REGION 4

Nebraska Synod Fund for Leaders (4A)

Luther Seminary

Erick Hill

Wartburg Theological Seminary

Gary Grinvalds Douglas Rothgeb

Lutheran School of Theology at Chicago

Kaitlynne Larson

**Northern Texas-Northern Louisiana Synod Fund for Leaders
(Ascension Lutheran Church) (4D)**

Lutheran School of Theology at Chicago

Olivia Riddle

REGION 5

Metropolitan Chicago Synod Fund for Leaders (5A)

Lutheran School of Theology at Chicago

Juan Manuel Arias Perea Walter Gillespie
Shemiah Curry Sean Ramsey
Dennis Debrie Philip Wallace
Timothy Geistlinger Paul Willey
Sandra Gillespie Jason Williams

Northern Illinois Synod Fund for Leaders (5B)

Wartburg Theological Seminary

Callie Arendt

Southeastern Iowa Synod – (5D)

Luther Seminary

Kristen Massa Jamie Richards
William Negron Aaron Schutte

Lutheran Theological Southern Seminary

Christine Taylor

Lutheran School of Theology at Chicago

Kathryn Linthicum

Wartburg Theological Seminary

Nathaniel Adkins Lotegeluaki Lengai
Madison Carroll Victoria Miceli
Jonathan Fry Haley Schepers

Western Iowa Synod Fund for Leaders (5E)

Wartburg Theological Seminary

Kimberly Campbell Jonathan Merritt

Northeastern Iowa Synod Fund for Leaders (5F)

Wartburg Theological Seminary

Rebecca Baird Lisa Robison
Laurie Iudin-Nelson Matthew Rossler
Craig Moss Joseph Tiegen

Northern Great Lakes Synod Fund for Leaders (5G)

Wartburg Theological Seminary

Lance Crevier Jennifer Elsenbroek
Wade Crevier Melissa Salminen

Northwest Synod of Wisconsin Fund for Leaders (5H)**Luther Seminary**

John Addison Alexandra Klug
 Emilia Hurst Natalie Wussler
 Andrea Rubesch

Wartburg Theological Seminary

John Baynton

South-Central Synod of Wisconsin Fund for Leaders (5K)**Luther Seminary**

Micah Sieg

Wartburg Theological Seminary

Laura Jasiczek Jennifer Watson
 Andrew Perger

Lutheran School of Theology at Chicago

Laura Frost

REGION 6**Southeast Michigan Synod Women of the ELCA Fund for Leaders (6A)****Luther Seminary**

Matthew Jewell Alysa G. Offman

North/West Lower Michigan Synod Fund for Leaders (6B)**Luther Seminary**

Megan Floyd

Wartburg Theological Seminary

Christina Beauvais

Trinity Lutheran Seminary

Valerie Slaght

Indiana-Kentucky Synod Fund for Leaders (6C)**United Lutheran Seminary**

Nathan Pratt

Northwestern Ohio Synod Fund for Leaders (6D)**Luther Seminary**

Shawn Schneider

Wartburg Theological Seminary

Jacinda Jones

REGION 7**New Jersey Synod Fund for Leaders (Advent Lutheran Church) (7A)****United Lutheran Seminary**

Ivan Kavoleff MaryAnne Psomas-Jackloski
 Jaymie Kosa Kim Syvertsen

New England Synod Fund for Leaders (7B)**United Lutheran Seminary**

Emmanuel Correa Vazquez
 Gail Angellis

Wartburg Theological Seminary

Rosa Radcke

Metropolitan New York Synod Fund for Leaders (7C)**Pacific Lutheran Theological Seminary**

Megan MacIver

Metropolitan New York Synod Fund for Leaders/Dr. John G. Huneke (7C)**United Lutheran Seminary**

Eric Brown Jean Dougherty
 Sergio Centeno Devon Gayle
 Marilyn Dolloway Deivis Ventura

Lutheran Theological Seminary at Philadelphia/Metropolitan New York Synod Fund for Leaders (7C)**United Lutheran Seminary**

Eric Brown

Upstate New York Synod Fund for Leaders (7D)**United Lutheran Seminary**

Melissa Bedell Diana Foote
 Charles Copps Lisa Frauens

Upstate New York Synod Fund for Leaders - Schwartz (7D)**Lutheran School of Theology at Chicago**

Elisabeth Preisinger

United Lutheran Seminary

Charles Copps Gerald Zimmerman
 Teresa O'Connor

Northeastern Pennsylvania Synod Fund for Leaders (Holy Spirit Lutheran Church) (7E)**Lutheran Theological Southern Seminary**

David Corrado

United Lutheran Seminary

MaryAnn Farnsworth Tyler Rankin
 Jayne Leh Heidi Shilanskas

Rev. Dr. Samuel R. and Linda L. Zeiser Seminary Scholarship (7E)**Luther Seminary**

Ashley Teter

United Lutheran Seminary

Brynn Anderson Joshua Labadie-Gulotta

**The Lutheran Theological Seminary at Philadelphia -
Southeastern Pennsylvania Synod Fund for Leaders (7F)**

United Lutheran Seminary

Ian Clements

REGION 8

West Virginia-Western Maryland Synod Fund for Leaders (8H)

Luther Seminary

Devin Ames

REGION 9

Virginia Synod Fund for Leaders (9A)

Luther Seminary

Chad Crowley

Lutheran Theological Southern Seminary

Lynette McSpadden

Lutheran School of Theology at Chicago

Jayne Kokkonen

United Lutheran Seminary

Andrew Tamingor Wesley Way

North Carolina Synod Fund for Leaders (9B)

Lutheran Theological Southern Seminary

Evan Fitzsimmons Gina Schaefer
Steven Hoyle Quentin Surace

Pacific Lutheran Theological Seminary

Nathan Sliwa

Wartburg Theological Seminary

Grace Robinson

South Carolina Synod Fund for Leaders (9C)

Lutheran Theological Southern Seminary

Joel Antley Laura Henrickson
Benjamin Bernstein Paula Perry
Kevin Burke Emily Whitlow

**Rev. H. Julian Gordy Bishop Emeritus, Seminary Scholarship
for Advocacy (9D)**

Luther Seminary

Brandon Konnow

United Lutheran Seminary

Allison Luppe

Lutheran Theological Southern Seminary

Stephen Abbott

Southeastern Synod Fund for Leaders (Skillrud) (9D)

Luther Seminary

Ada Waddell Jamie Witt

Lutheran Theological Southern Seminary

Bryce Yamin

Lutheran School of Theology at Chicago

Laxmikanth Vardhanapu

Pacific Lutheran Theological Seminary

Wilma Garing

Southeastern Synod Women of the ELCA Fund for Leaders (9D)

Luther Seminary

Marsha Wilson-Boggs

Wartburg Theological Seminary

Holly Cummings

Florida-Bahamas Synod Fund for Leaders (9E)

Luther Seminary

Andrew Harrington

United Lutheran Seminary

Dori Dunham

Lutheran Theological Southern Seminary

Steven Benko

**Florida-Bahamas Synod Women of the ELCA Fund for
Leaders (9E)**

Lutheran Theological Southern Seminary

Macy Kennedy

ADDITIONAL SYNOD SCHOLARSHIPS

Southwestern Texas Synod Fund for Leaders (4E)

La Crosse Area Synod Fund For Leaders (5L)

2022-2023 CONGREGATION FUND FOR LEADERS SCHOLARSHIP RECIPIENTS

This year, 12 scholarships totaling \$45,600 are being supported by Fund for Leaders congregation endowment funds valued at \$1,527,074 on June 30, 2022.

Abiding Presence Lutheran Church Seminary Scholarship Fund — Burke, Va.

Ailen Mushi — Pacific Lutheran Theological Seminary

Bethlehem Lutheran Seminary Scholarship Fund — Joliet, Ill.

Callie Arendt — Wartburg Theological Seminary

Desert Hills Lutheran Church Seminary Scholarship Fund — Green Valley, Ariz.

Daniel Volkmann — Wartburg Theological Seminary

Edison Park Lutheran Church Nasby-Anderson Seminary Scholarship Fund — Chicago, Ill.

Bethany Ketchum — United Lutheran Seminary

Epiphany Lutheran Church Seminary Scholarship Fund — Pleasantville, N.J.

Jason Reed — Wartburg Theological Seminary

Our Savior Lutheran Church Seminary Scholarship Fund — Menomonie, Wis.

Esther Sianipar — Luther Seminary

St John's Lutheran Church Seminary Scholarship Fund — Knoxville, Tenn.

Christine Taylor — Lutheran Theological Southern Seminary

St. Paul's Evangelical Lutheran Church, Doylestown, Pa. - The Rev. Herbert and Lucy Piehler Seminary Scholarship Fund

Adham Alaraj — Pacific Lutheran Theological Seminary

The Rev. Walter E. Wittman Seminary Scholarship Fund/Gloria Dei Lutheran Church — Downers Grove, Ill.

Erik Boss — Lutheran School of Theology at Chicago
Sharei Green — Lutheran School of Theology at Chicago

Trinity Lutheran Church Seminary Scholarship Endowment Fund — Fort Collins, Colo.

Mercedes McCue — Luther Seminary

Trinity Lutheran Church Seminary Scholarship Fund — Greenville, S.C.

Patrick Preacher — Wartburg Theological Seminary

ADDITIONAL CONGREGATION FUNDS

This year, scholarship dollars from these funds, totaling \$16,700, are supporting the TEEM Scholarship.

Advent Lutheran Church Seminary Scholarship Endowment Fund — La Grange, Ga.

Bethlehem Evangelical Lutheran Church Endowment Fund — Chicago, Ill.

First Lutheran Church Seminary Scholarship Endowment Fund — Colorado Springs, Colo.

The Rev. John Weber Seminary Scholarship Fund/Christ Our Shepherd Lutheran Church — Peachtree, Ga.

Trinity Evangelical Lutheran Church Forrest and Betty Reid Scholarship Fund — Moline, Ill.

2022-2023

THEOLOGICAL EDUCATION FOR EMERGING MINISTRIES (TEEM) FUND FOR LEADERS SCHOLARSHIP RECIPIENTS

As part of our commitment to support a diverse group of students, Fund for Leaders is now allocating 10% of available (i.e. nonrestricted) funds to TEEM students. We hope that this amount, combined with special grants and designated gifts, will allow us to give generous awards to this group of students each year. This year the TEEM Scholarship awards are \$5,000 each. We celebrate with these 80 called and gifted leaders.

Northwest Washington Synod - 1B

Joseph Lual

Southwestern Washington Synod - 1C

Jae Young Ma

Northwest Intermountain Synod - 1D

Robert Andrew Hamblen

Sierra Pacific Synod - 2A

Michael Basil

Alan Gaston

Southwest California Synod - 2B

Johnel Barron

MaryAnn Harrison

Maurice Ingram

David Lin

Edgardo Ramirez

Pacifica Synod - 2C

Elena Enriquez

Michelle Kuan-Yang

Alicia Saenz

Josefina Villalpando Paredes

Grand Canyon Synod - 2D

Veronica Alvarez

Wanda Frenchman

Guy Ilunga

Solomon Kuch

Rocky Mountain Synod - 2E

Jesse Davis

Edward Mooney

Margarita Reyes

Lisa Rygiel

Colleen Teeuwe

Eastern North Dakota Synod - 3B

Janelle Hansen

Penny Millspaugh

South Dakota Synod - 3C

Todd Hakl

Rhonda Hansen

Patricia Schubert

Southwestern Minnesota Synod - 3F

Robert Ossefoort

James Rach

Southeastern Minnesota Synod - 3I

Bungjot Nyigow

Yang Tut

Nebraska Synod - 4A

Deborah Hammer

Nancy Moore

Rex Rogers

Central States Synod - 4B

Vicki Hedger

Brenda Rodger

Arkansas-Oklahoma Synod - 4C

Tamarreau Evans

Linda Ewen

Jeffrey Gillam

Texas-Louisiana Gulf Coast Synod - 4F

Donna Krueger

Metropolitan Chicago Synod - 5A

Dennis Debrie
Sandra Gillespie
Walter Gillespie
Rodger Jones
Philip Wallace

Northern Illinois Synod - 5B

Thomas Mosbo

Western Iowa Synod - 5E

Kimberly Campbell
Chad Duffy

Northeastern Iowa Synod - 5F

Micheal Erickson
Isaiah Stansbery
Jeremy Wolfe

East-Central Synod of Wisconsin - 5I

Amy Penza
Jennifer Sosinski

Greater Milwaukee Synod - 5J

Ramiro Flores

Southeast Michigan Synod - 6A

Enoch Carlton

Indiana-Kentucky Synod - 6C

Khai Cho

Northeastern Ohio Synod - 6E

Judyann Carbone
Vedyn Wylie

New Jersey Synod - 7A

Philip Scherzer
Kara Song

New England Synod - 7B

Rosa Radcke

Upstate New York Synod - 7D

Melissa Bedell

Northwestern Pennsylvania Synod - 8A

John Kearns
Kevin Schafer
Michael Snider

Allegheny Synod - 8C

Christy Harford
Regina Holliday
Penny Koontz
Steven Koths
Allen Stump

Upper Susquehanna Synod - 8E

Ruth Ann Kephart
Samuel Leister
Amy Shuck

Delaware-Maryland Synod - 8F

Travis Sanders
David Wright

Metropolitan Washington, D.C. Synod - 8G

Ailen Mushi

Virginia Synod - 9A

Stephen Povlish

Southeastern Synod - 9D

Wilma Garing
Audra Gehler

GRATITUDE FOR AND ACKNOWLEDGMENT OF NEW DONORS AND PARTNERS

We wish to thank all the faithful people, congregations and synods that gave gifts totaling over \$2 million to the ELCA Fund for Leaders' endowment funds (general, Mission Developer, Federal Chaplaincy Ministry, synod, and congregation funds) from July 1, 2021, through June 30, 2022. Your commitment to raising up and supporting leaders makes possible the ministry of the ELCA Fund for Leaders.

Every year, the Fund for Leaders endowments are sustained by hundreds, sometimes thousands, of individual gifts. We are exceedingly grateful for each and every one of them, but it is our practice to acknowledge here the individuals and groups who have established new named endowment funds in the previous year. A Fund for Leaders named endowment fund can be established with a gift or multiyear commitment of \$25,000 or more. The current standardized value of a full-tuition scholarship — \$19,000 per year — can be sustained by an endowment of \$475,000.

NEW ENDOWMENT FUNDS ESTABLISHED

JULY 1, 2021–JUNE 30, 2022

GENERAL

Jutta F. Anderson Seminary Scholarship Fund
The Padley Family Seminary Scholarship Fund
Zoar Lutheran Church Seminary Scholarship Fund
Rev. Tom and Sherry Slater Seminary Scholarship Fund
Our Savior Vero Beach Seminary Scholarship Fund
St. Peter Lutheran, Norwalk, OH Seminary Scholarship Fund

FEDERAL CHAPLAINCY MINISTRY

Colonel Robert A. Williamson, MD Scholarship
Chaplain Eric and Mrs. Paula Wester Chaplaincy Scholarship Fund
Thomas J. Anders and Gerald E. Lloyd Memorial Chaplaincy Scholarship
Elmstrom Family Federal Chaplaincy Scholarship Fund

Endowment fund valuations calculated as of June 30, 2022.

* Endowment funds that contribute to a variety of ELCA churchwide ministries, including the Fund for Leaders.

** Endowment funds that support Mission Developer scholarships.

*** Endowment funds that support Federal Chaplaincy Ministry scholarships.

ENDOWMENT VALUED

\$1,000,000+

Paul M. Dauten, Jr. Memorial Endowment Fund
John E. and Marcia F. Grove Memorial Scholarship Endowment
Mr. and Mrs. Peter, William and Esther Herlein Fund*
MIF Mission Developers Seminary Scholarship Fund**
Omer G. and Annabelle K. Voss Family Donor Advised Fund

**ENDOWMENT
VALUED** | **\$400,000-
\$999,999**

Rev. Olaf A. Berge Memorial Fund
Bethel Lutheran Church Endowment Fund, Chicago Ill.*
ELCA Federal Chaplaincy Scholarship Fund***
Kenneth and Sandra Falkinham Seminary Scholarship
Endowment Fund
Rev. Milton Gustafson Memorial Endowment Fund
Ruth Walker Holliday Memorial Seminary Scholarship
Endowment Fund
Gunther C. and Johanna W. Holpp Memorial Endowment
Fund*
Orville R. Klopff Memorial Endowment Fund*
E. Marilyn Oberle Seminary Scholarship Endowment Fund
Marius and Cora Newell Titterud Memorial Endowment
Fund
Dr. Adelia E. Weis Memorial Ministerial Scholarship Fund*
Astrid V. Wilson Memorial Endowment Fund
William D. Wubben Memorial Endowment Fund*

**ENDOWMENT
VALUED** | **\$200,000-
\$399,999**

Rick and Kathy Ambrose Scholarship Endowment Fund
Albert G. and Svea H. Anderson Memorial Fund
Rev. Dr. E. Earl Anderson Seminary Scholarship Fund
Marvin D. Anderson Tuition Legacy Fund
Ascension Lutheran Church Seminary Scholarship
Endowment Fund, Garland, Texas
L. Travis and Jean M. Brannon Endowment Fund
Christ Lutheran Church Endowment Fund, Chicago, Ill.*
George and Frances Cornell Family Mission Developer
Seminary Scholarship Fund**
Lester Eugene Gyllstrom II Seminary Scholarship Fund
Alice D. Hillstrom Legacy Endowment Fund*
Max W. and Phyllis Krell Family Seminary Scholarship
Endowment Fund
Lahm Family Seminary Scholarship Fund
Irma K. Lauffer 1999 Endowment Fund
Dr. Oliver A. Muhonen Memorial Endowment Fund*
Portico Benefit Services Seminary Scholarship Endowment
Fund
Carol J. Reed Endowment Fund
Delilah E. Ross Memorial Endowment Fund**
Rev. Donald P. Schneider Seminary Scholarship Fund
Rev. Dr. Lauritz and Mrs. Margaret Vigness Mission
Developer Scholarship Fund**
Colonel Robert A Williamson, M.D. Scholarship***
Rev. Eric Wogen Seminary Scholarship Endowment Fund
J. Binnie Wolfe Memorial Scholarship Fund
Sara Kramer Wolfe Memorial Scholarship Fund

ENDOWMENT VALUED | **\$100,000-
\$199,999**

Rev. Kenneth R. Ahlstrand Seminary Scholarship Endowment Fund
Bishop H. George and Jutta F. Anderson Endowment Fund
Doris M. Bagley Fund for Leaders Memorial Endowment Fund
Carrie J. Brown Memorial Endowment Fund
Dr. Carol Craig Seminary Scholarship Endowment Fund
Rev. Guy Edmiston Mission Endowment Fund
Erckmann-Miller Seminary Scholarship Fund
First Lutheran Church and Kountze Memorial Lutheran Church Seminary Scholarship, Omaha, Neb.
Rev. Harold and Rachel Goers Seminary Scholarship Fund
George A. and Dorothy L. Johnson Living Legacy Fund*
Imogene Lewin Seminary Scholarship Fund
Lord of Life Lutheran Church Seminary Scholarship Fund, Glenn Heights, Texas
Paul L. and Valerie C. Miller Seminary Scholarship Endowment Fund
Margarete Ursula Nitschke Seminary Scholarship Endowment Fund
Frances and Donna Olson Seminary Scholarship Endowment Fund
Rev. Dr. Richard D. and Melba N. Reichard Seminary Scholarship Fund
Carl E. and Alice E. Schaedel Memorial Endowment Fund
Florence E. Von Behren Memorial Endowment Fund*
Sara E. and John R. Wise Mission Developers Seminary Scholarship Fund**

ENDOWMENT VALUED | **\$50,000-
\$99,999**

Rev. Dr. Phyllis Anderson Seminary Scholarship Endowment Fund
Rev. Victor L. Brandt Seminary Scholarship Fund
Rev. Paul Cobb Seminary Scholarship Endowment Fund
Cox Memorial Scholarship Endowment Fund
Bjorg Davidson Johannesson Mission Developer Scholarship Fund**
Merlin E. Flesner Memorial Endowment Fund*
Mildred A. Flotow Memorial Endowment Fund*
Rev. P. Richard and Nancy L. Grove Mission Developer Scholarship Fund**
Charles, Joe Anne, Nan and Al Lintz Scholarship Fund
Earl L. Mummert Memorial Endowment Fund
Rev. Elizabeth A. Platz Seminary Scholarship Fund
Raymond and Ruth Schultz Christian Education Fund*
A. Craig Settlege Memorial Scholarship Endowment Fund
Rev. Tom and Sherry Slater Seminary Scholarship Fund
St John's Evangelical Lutheran Church Seminary Scholarship Fund
Erik and Barbara Stone Seminary Endowment Fund
Swanson Family Seminary Scholarship Endowment Fund
David D. and Barbara A. Swartling Seminary Scholarship Fund
Gerald and Marihope Troutman Scholarship Fund
Corrine Wehvilainen Memorial Endowment Fund*
Elizabeth K. Weisburger Mission Developer Seminary Scholarship Fund**
Bryn, Nicholas, and Betty Jane Ziemendorf Seminary Scholarship Fund

ENDOWMENT VALUED \$25,000-\$49,999

Abiding Savior Lutheran Church Seminary Scholarship, Independence, Mo.

George and Martha Benson Memorial Endowment Fund

Howard and Marie Cleer Seminary Scholarship Endowment Fund

ELCA Seminary Presidents Fund for Leaders

Iveda C. and Christen H. Evanson Seminary Scholarship Fund

Rev. Murray D. and Rhoda M. Finck Federal Chaplaincy Seminary Scholarship Fund***

Van and Linnea Grosse Seminary Scholarship Fund

Bishop Mark S. Hanson Fund for Leaders Scholarship Fund

Helen S. and Earl Randolph Hessler Jr. Family Mission Developer Scholarship Fund**

Ben Larson Memorial Seminary Scholarship Endowment Fund

Arthur and Vera Mabis Endowment Fund*

Rev. Earlean Miller Seminary Scholarship Fund

Lois and Gerald Olsen Mission Developer/Redeveloper Scholarship Fund**

Eddie H. Olson and Donald L. Olson Memorial Endowment Fund*

Rev. Stanley E. Olson Mission Developer Seminary Scholarship Fund**

Our Savior's Lutheran Church Mission Developer Scholarship Fund, Lake Oswego, Ore.**

Padley Family Seminary Scholarship Fund

Rev. Franklin G. Senger III and Mr. Edward J. Wilhelm Seminary Scholarship Endowment Fund

Earl Melvin Sletten Fund for Leaders Scholarship Endowment

Rev. Arne Strandjord Memorial Endowment Fund

Rev. Jeanette Bialas Strandjord Seminary Scholarship Endowment Fund

Rev. Dr. Frederick, Anna, and Kathleen Wedemeyer Seminary Scholarship

OTHER ENDOWMENTS SUPPORTING FUND FOR LEADERS

Curtiss A. and Elaine V. Anderson Memorial Endowment Fund*

Jutta F. Anderson Seminary Scholarship Fund

Thomas J. Anders and Gerald E. Lloyd Memorial Chaplaincy Scholarship***

Calvary Lutheran Church Fund for Leaders Endowment Fund

Carmen Chavez Memorial Endowment Fund

Ottilya Elliott Memorial Endowment Fund*

Elmstrom Family Federal Chaplaincy Scholarship Fund***

Fund for Leaders Alumni Scholarship Fund

Rev. Ronald T. and Sue Ann Glusenkamp Seminary Scholarship

Inspire Faith Seminary Scholarship Fund

Reverend Ivan and Kathryn Ives Federal Chaplaincy Seminary Scholarship***

Leroy R. Keranen Endowment Fund*

William Larsen Memorial Scholarship Endowment

Rev. Dr. Duane Larson and Dr. Joen Larson Seminary Scholarship

Rev. Scottie & Karen Lloyd Chaplaincy Seminary Scholarship***

Rev. Mark and Kari Olsen Seminary Scholarship Fund

Our Savior Vero Beach Seminary Scholarship Fund

Louise Stroud Sullivan Federal Chaplaincy Seminary Scholarship***

Rev. Dr. Gerald S. Troutman Seminary Scholarship Endowment Fund

Elaine P. Tucker Seminary Scholarship Fund

Chaplain Eric and Mrs. Paula Wester Chaplaincy Scholarship Fund***

IN MEMORIAM

With thanksgiving to God, we remember the faithful and generous supporters of the Fund for Leaders whose deaths we have learned of in the past year. The gifts they gave and/or named endowment funds they established provide a legacy that will make a difference in the lives of ELCA seminary students and the congregations and ministries they serve for years to come. Those whose names are known to us are listed below with thanks for their faithful witness to the gospel.

Mrs. Beverly D. Anderson

Mrs. Louise Baar

Ms. Gloria E. Baker

Mr. Philip J. Baylis

Mr. Ludwig Benner Jr.

The Rev. LeRoy H. Beutel

Mrs. Kathryn Braatz

Mrs. Shirley Cox

The Rev. Lowell O. Erdahl

The Rev. Earl M. Fritz

The Rev. Ronald C. Golberg

Ms. Louise E. Goos

Mrs. Judith Gottschling

Mr. Jack G. Hewitt Jr. and Mrs. Marilyn J. Hewitt

Mrs. Carol C. Kusserow

Dr. Joen Larson

The Rev. Harold R. Lohr

Mr. Earle Marsh

The Rev. Amy Nyman

The Rev. Geraldine A. Opsahl

Mr. Edward L. Petersen

Mr. David G. Peterson

The Rev. Julius L. Peterson

The Rev. Richard C. Radde

The Rev. Armin H. Reitz

Mrs. Sharon A. Seagren

Mrs. Marian Shrader

The Rev. Gordon L. Syverson

Ms. Lynne K. Thompson

The Rev. Joseph M. Wagner and Ms. Claudia R. Wagner

Dr. Robert A. Williamson

NUMBERS FOR THE 2022-2023 ACADEMIC YEAR

FFL Churchwide Scholarships	141
Full-tuition	118
Mission Developer	20
Federal Chaplaincy	3
Total amount to be distributed:	\$2,328,625
 Synod and Congregational Partner Scholarships	217
Total amount to be distributed:	\$759,833
 TEEM Scholarships	80
Total amount to be distributed:	\$400,000
 Total number of scholarships awarded	438
 Students supported in 2022-2023	375
 Total amount to be awarded in 2022-2023:	\$3,488,458

A NOTE FROM THE REV. MARK BERNTHAL, FUND FOR LEADERS LEADERSHIP TABLE

God can do anything, you know — far more than you could ever imagine or guess or request in your wildest dreams! [God] does it not by pushing us around but by [God's] Spirit working deeply and gently within us.

Glory to God in the church!

Glory to God in the Messiah, in Jesus!

Glory down all the generations!

Glory through all millennia! Oh, yes! –Ephesians 3:20-21 MSG

Friends and partners in Christ,

Remembering my first gathering with the Leadership Table of the ELCA Fund for Leaders over a decade ago makes me smile. When I learned that the ultimate vision was to support the full tuition of every rostered ministry candidate attending an ELCA seminary, the phrase “mission impossible” came to mind. I’m so grateful to God that I kept my joke to myself. FFL gave me the opportunity to partner with some incredible leaders and donors who dared to champion a vision way more grand than I imagined in that moment.

As we observe this 25th anniversary, I have much more to smile about. I smile knowing that God forgives my early lack of vision. I smile over the hundreds of courageous and competent Fund for Leaders recipients who will lead the church’s future. I smile over our scholarships’ impact on students and seminaries as they live into God’s future with the vision of sharing the gospel while ministering to the needs of our changing world. I smile knowing my commitment and generosity to Fund for Leaders have become one of my life’s greatest joys. Mostly I smile over learning anew that “God can do anything, you know — far more than I could ever imagine or guess or request ... not by pushing ... but by working within us.”

As Fund for Leaders continues to grow into its ultimate vision, what will the next decade and the next 25 years bring? With all my heart, I believe it will bring smiles to many more of God’s people. The ministry of Fund for Leaders is indeed God’s work. As God works through all who are called to support and receive the blessings of this shared vision, God is sure to continue to do “far more than we could ever imagine or guess or request in your wildest dreams!”

As we say “Happy anniversary!” together, may we build on the past, celebrate the present and continue to give in the future, which is always in God’s hands.

Glory to God,



Pastor Mark Bernthal

FUND FOR LEADERS FOUNDING LEADERS

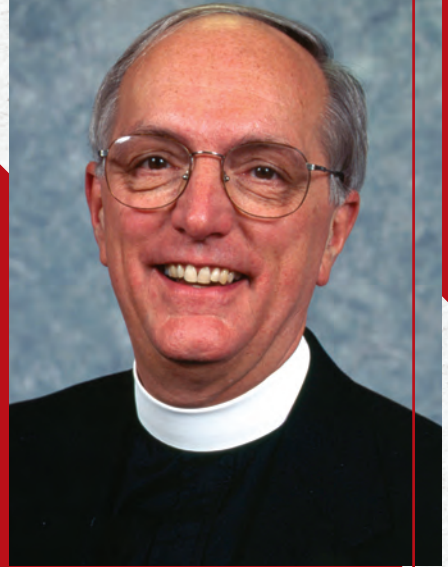
The Rev. Dr. Phyllis Anderson, the Rev. Donald Hallberg and the Rev. Joseph Wagner worked together to establish the Fund for Leaders in 1997. Twenty-five years later, their vision continues to shape our church and strengthen our future. We give thanks for all their leadership over the years!



THE REV. DR. PHYLLIS ANDERSON

served as the director for theological education in the Division for Ministry.

THE REV. DONALD HALLBERG
served as the executive director of the ELCA Foundation.



THE REV. JOSEPH WAGNER, D.MIN.

served as the executive director of the Division for Ministry.



Thank you for attending our celebration and for your inspiration, generosity and partnership over the last 25 years. In honor of the expansion of the Fund for Leaders ministry and the creation of a new type of scholarship this year, we have chosen to forgo a traditional 25th Anniversary Celebration “giveaway” item. Instead, we are acknowledging your generosity by forwarding the “event giveaway” funds to the new FFL TEEM scholarship.



2019 ELCA Fund for Leaders Scholarship Awards Banquet



The first class of Fund for Leaders scholarship recipients

We are a thriving church, and each of us has a unique role to play in helping the mission and ministry of this church. Through your gifts to the ELCA Fund for Leaders, you not only support students now but also invest in our church’s future.

To make a gift or to learn more about naming the ELCA Fund for Leaders as a charitable beneficiary in your estate plan, please contact us today.

ELCA Fund for Leaders
Rev. Marissa Krey
773-380-2731
marissa.krey@elca.org
ELCA.org/fundforleaders



ELCA
Fund for Leaders